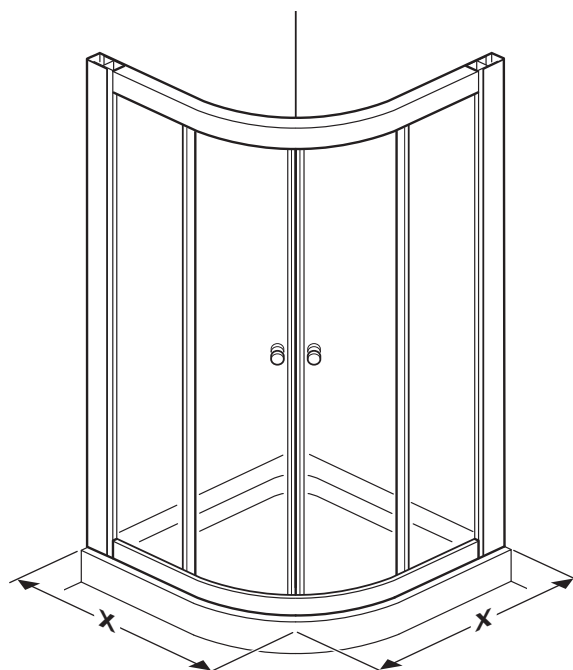


QUADRANT SHOWER ENCLOSURE



DIMENSIONS

Check the enclosure size in the table below matches the showertray installation.

800 Door X = 780 - 800mm

900 Door X = 880 - 900mm

*Please read these instructions carefully and keep for future reference.
Incorrect fitting will invalidate the guarantee.*

SAFETY

- Handle glass with great care. Although the glass is very tough, sharp impacts can damage both the glass and metal frame.
- Make sure there are no hidden pipes or cables hidden in the wall where you intend to drill.
- Wear safety goggles, shoes and appropriate clothing.

BEFORE INSTALLATION

- Two people are needed to carry out parts of the procedure, lift with care.
- Check that the shower tray is level in all directions. The enclosure will not sit correctly on an uneven surface. If uneven, the wall channels may not fit and the doors may not shut correctly.
- The shower tray and the enclosure must match in size. Attempting to fit the incorrect size of enclosure to the shower tray will result in water leaks.
- The enclosure should be fitted on tiled walls which are sealed with waterproof grout. There must be a good silicone seal between the rim of the shower tray and the wall.
- Always check very carefully that components are vertical.

Equipment needed:

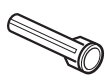

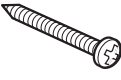
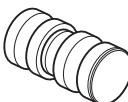



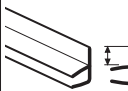
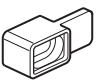
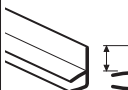


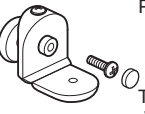

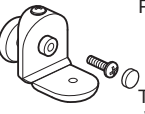
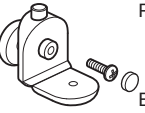
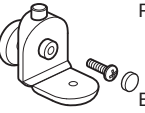
Drill, 6.5mm Masonry Bit, 4.5mm & 3mm Metal Bits (general), Crosshead Screwdriver, Right Angle, Fine Tooth Saw, Spirit Level, Pencil, Scissors, Silicone Sealant, Tape Measure, Masking Tape.

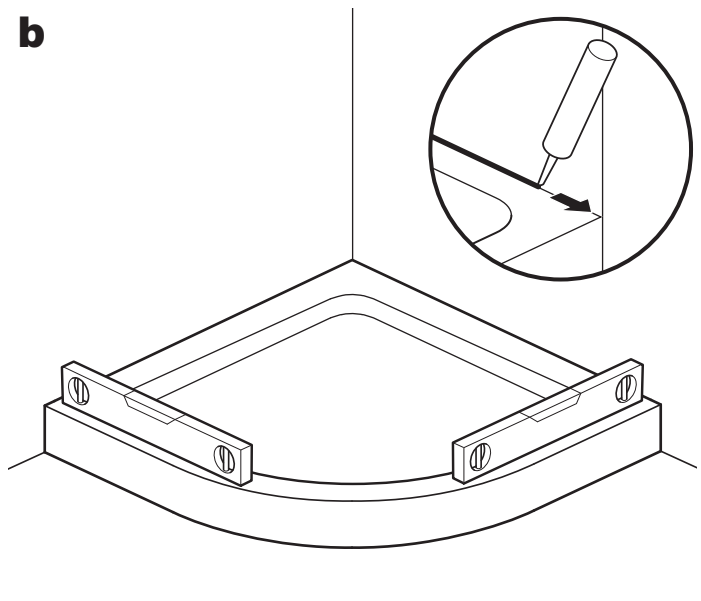
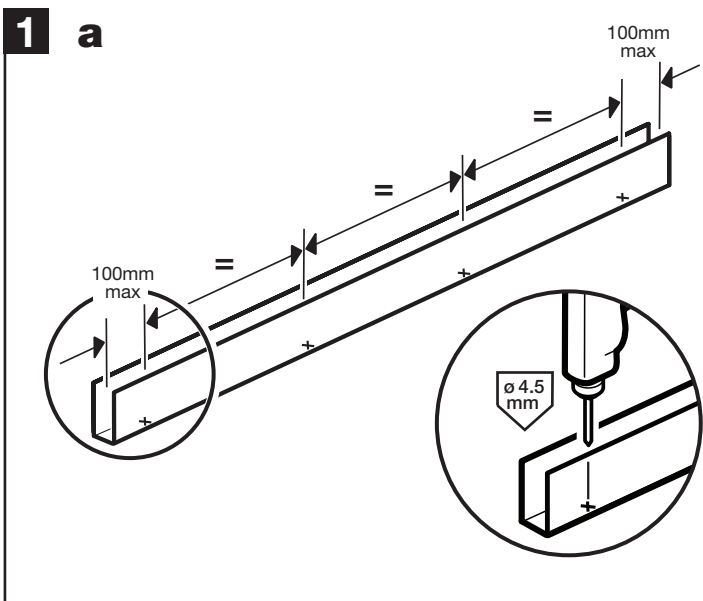
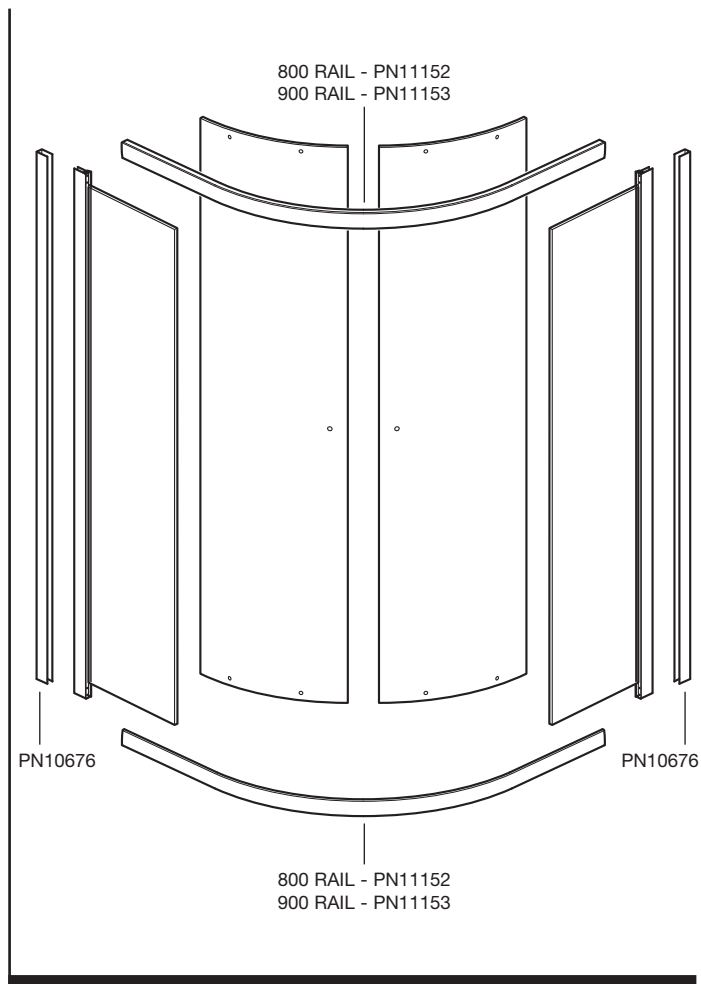
Note: The screws and wall plugs supplied are for masonry walls. For lightweight walls i.e. stud partition, plasterboard etc, use the correct type of fixings.

CUSTOMER CARELINE 01746 713410

Check contents of pack before installation. If anything is missing, contact our Customer Careline for assistance.

CUSTOMER CARELINE: 01746 713410

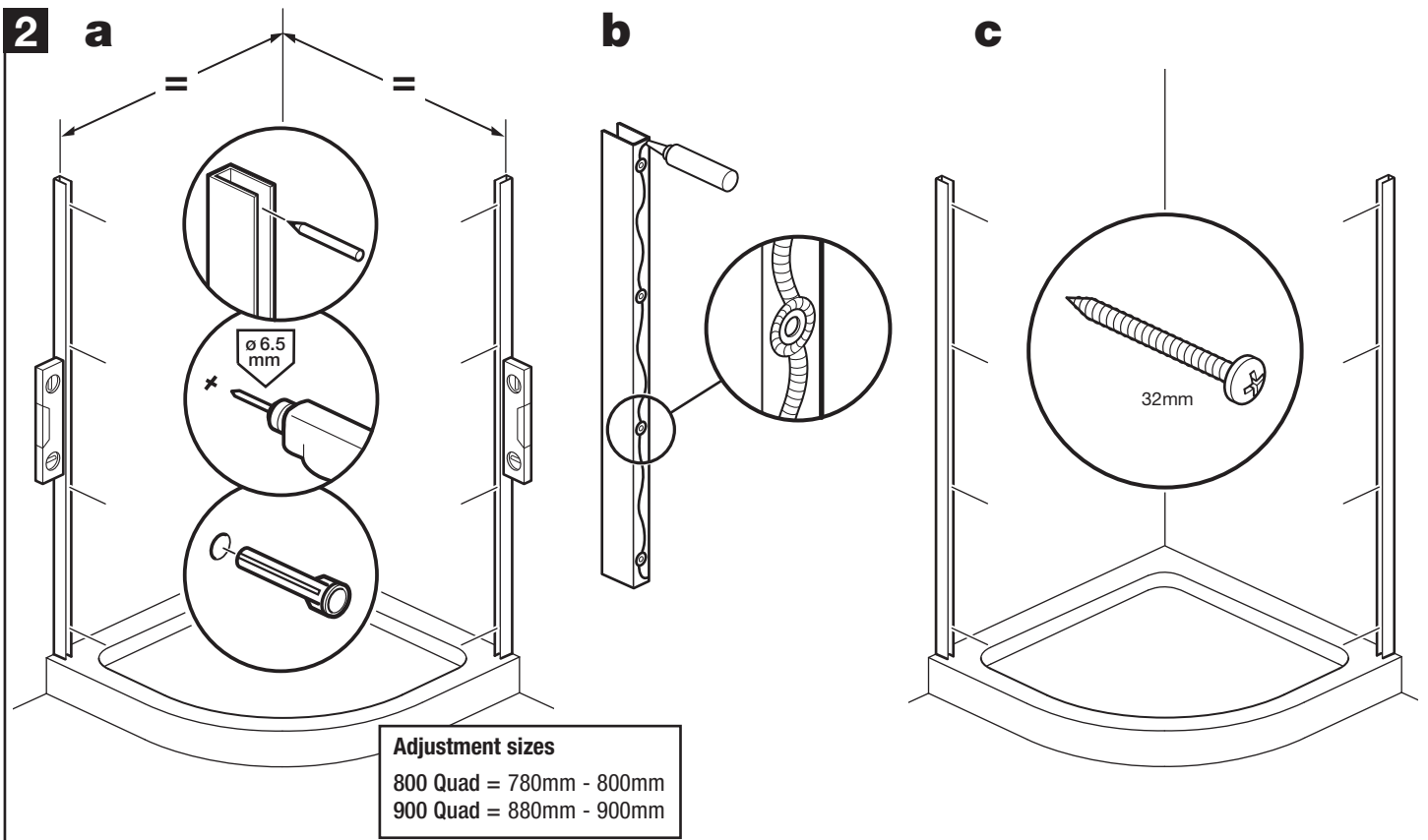
	PN3230	8		PN60516	8
	PN3225	16		PN60511	2
	32mm				
	PN60524	18		PN60521	4/4
	10mm				
	PN4748	6		PN40260	2
	PN50489	4		PN40095	2
	PN50488	4		PN40333	800 model 1 900 model 2
	PN60517	4		PN80564	1/1
	Top wheels				
	PN60518	4			
	Bottom wheels				



a: Drill holes in both wall channels (PN10676) at points shown using a 4.5mm drill bit, through the middle and in the groove.

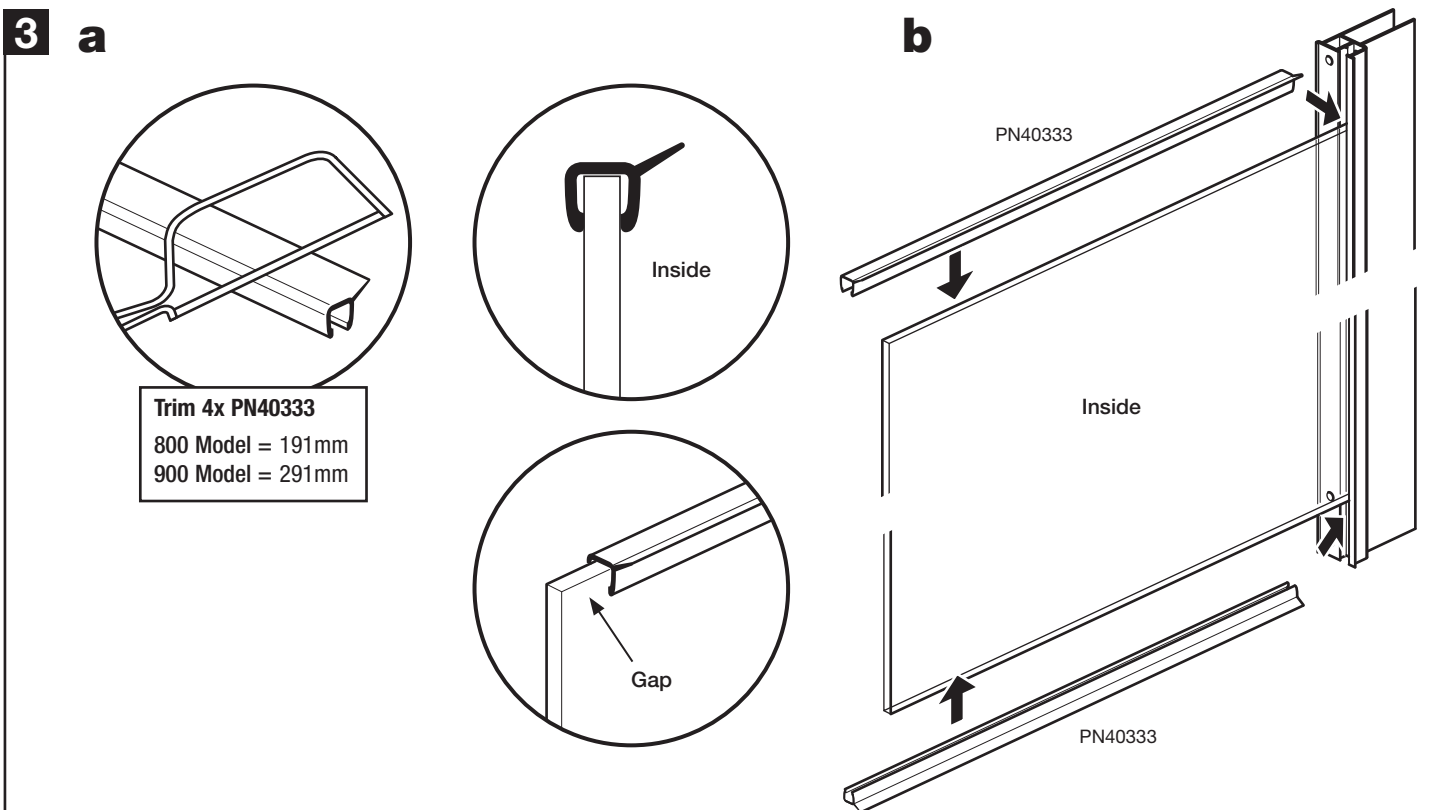
b: Ensure the shower tray is level in all directions.

IMPORTANT: Clean the tray and seal the gap between the tray surface and tiles. It is important that the tray is sealed right up to the tray edge so that the bottom of the wall channel is sealed. Failure to do this will cause water to leak under the wall channel and between the tray and tiles, resulting in damp patches on the wall and under the tray.



a: Place the wall channels on the tray ensuring they are vertical and an equal distance back from the front of the tray. Place masking tape against the wall before marking drill hole positions, this will help prevent the drill bit slipping. Drill 6.5mm holes, 30mm deep and insert the wall plugs.

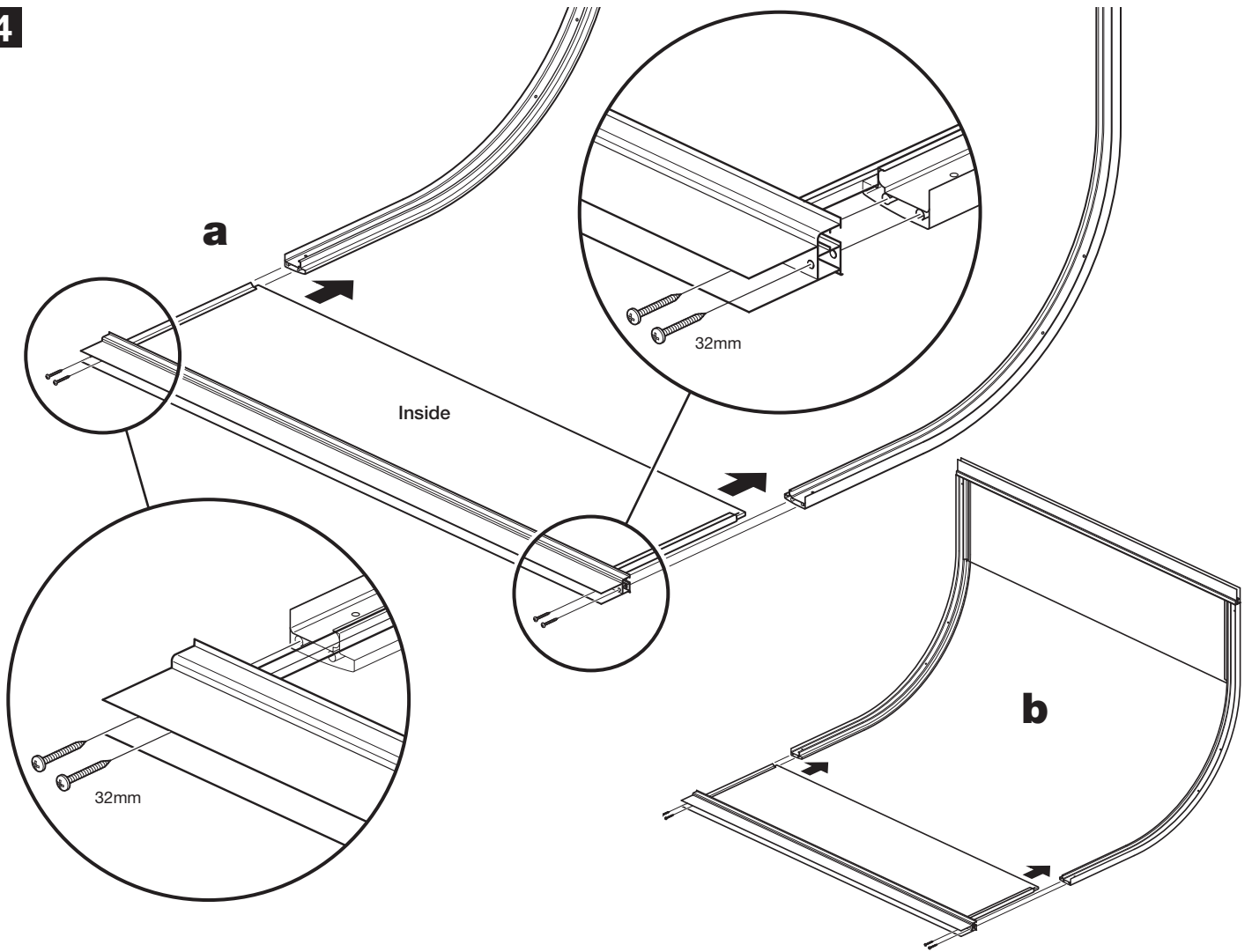
b: Apply sealant to the back of the wall channels. **c:** Fix the wall channels to the walls using 8 x 32mm screws.



a: Trim four horizontal fixed panel seals (PN40333) to length: 800 Model = 191mm - 900 Model = 291mm.

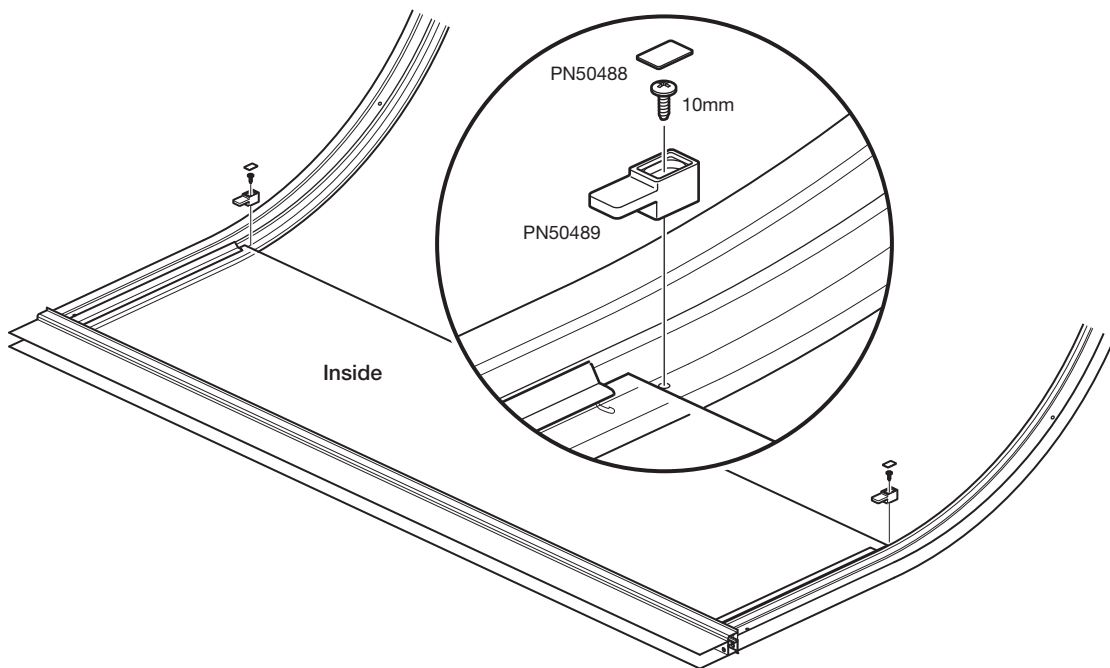
b: Fit trimmed seals to top and bottom of both fixed panels. **Important:** Seal 'flipper' must be on inside of panel. The seals must be tight up against the metal. **Note:** Wetting the glass with water will help fit the seals.

4

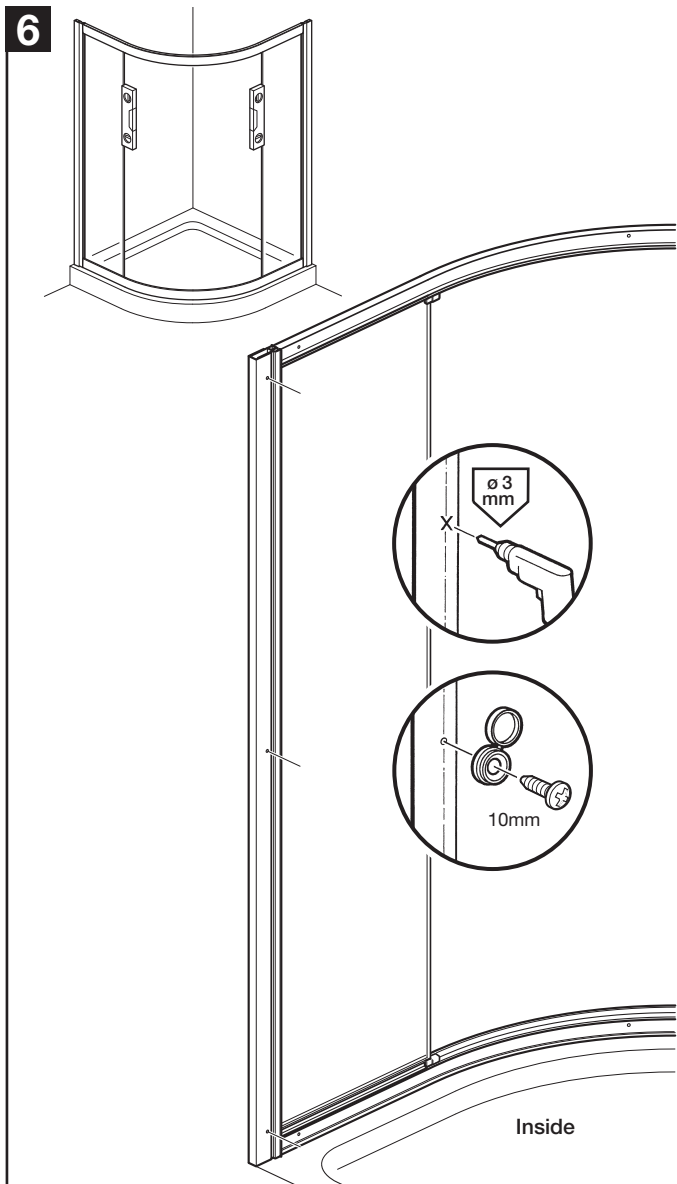


a: Position and attach the horizontal rails to top and bottom of the first fixed panel using 4 x 32mm screws.
b: Position and attach the second fixed panel to the horizontal rails using 4 x 32mm screws.

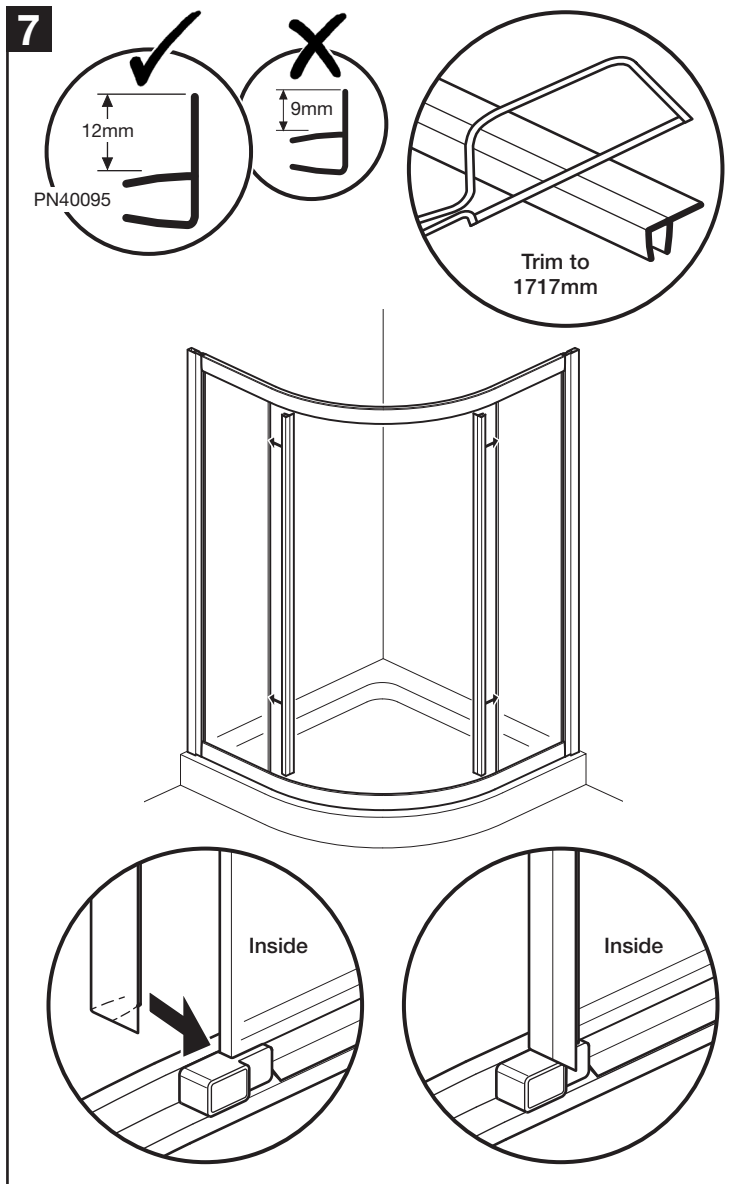
5



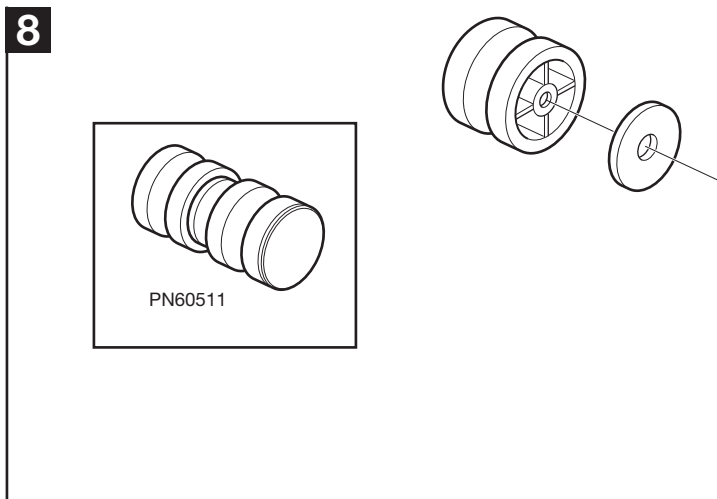
Attach 2 x glass clamps to each of the horizontal rails (at edge of glass) using 10mm screws, **tighten by hand only - do not overtighten**. Push fit glass clamp covers.



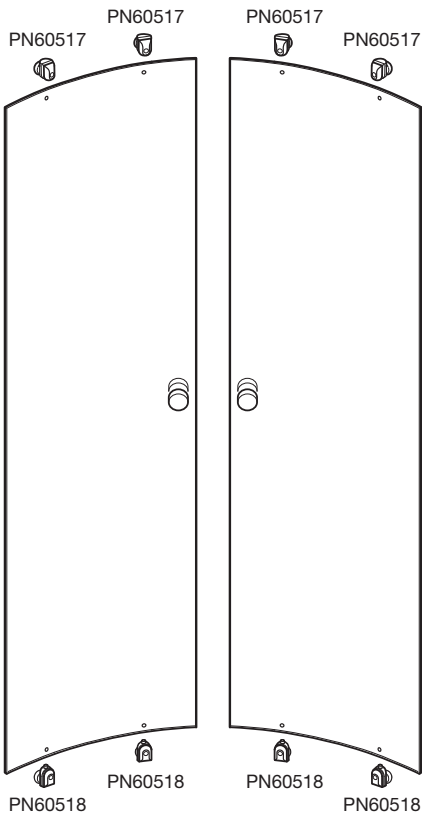
Carefully position the assembled fixed panels into the wall channels as shown.
 Ensure sides are vertical.
 Drill inside wall channels using 3mm drill bit (3 on each side) where shown. Do not drill too deep.
 Fix using 10mm screws and screw caps.



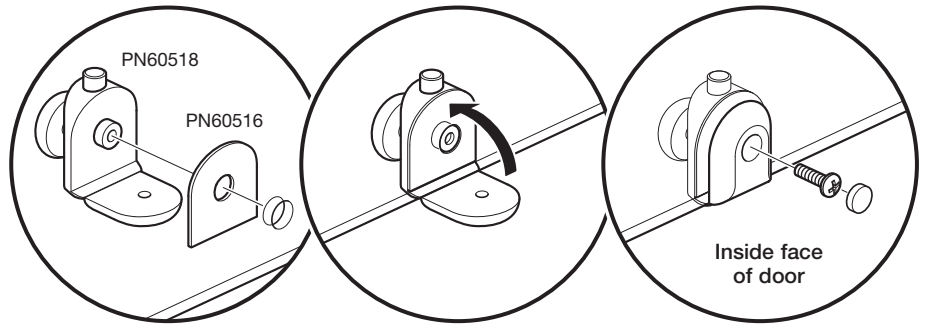
Select the vertical seals with the 12mm flipper (PN40095) and trim to 1717mm.
 Fit trimmed seals to both fixed panels, **seals must sit tight against glass clamps (top and bottom).**
Important: Seal 'flippers' must be on inside of the enclosure.
Note: Wetting the glass with water will help fit the seals.



Fit the door handles to the doors ensuring the plastic washers are fitted each side of the glass.

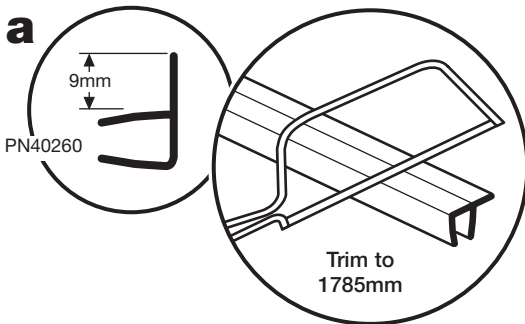
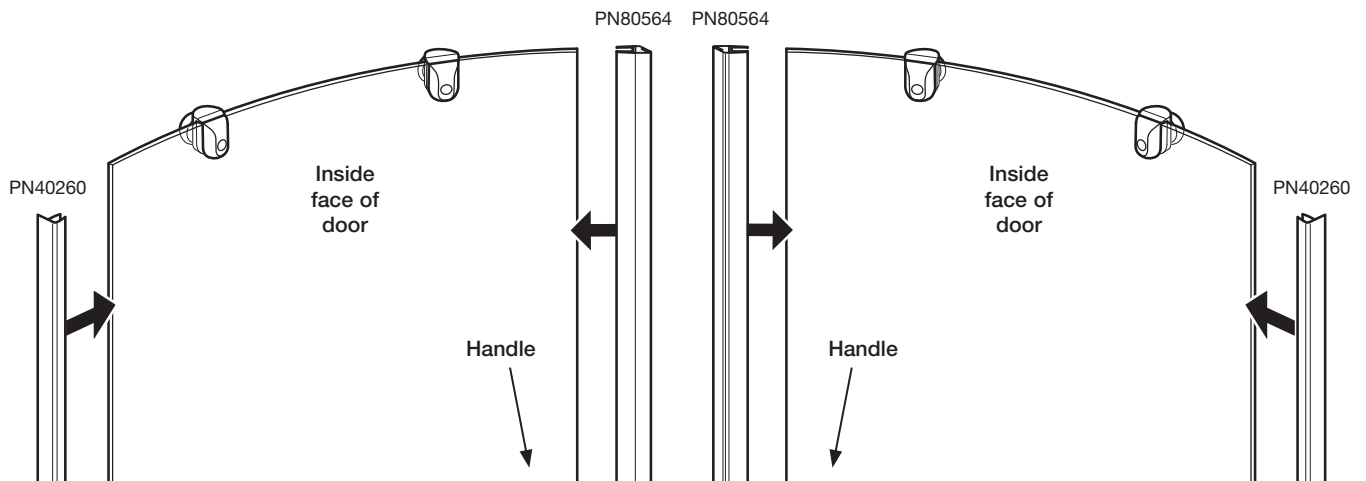
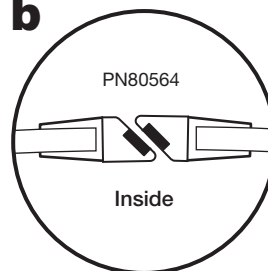
9

Bottom 'plunger wheels' are shown as an example.



Attach the wheels to the doors: Adjuster wheels (PN60517) at the top and plunger wheels (PN60518) at the bottom.

Attach as shown, ensure washers (PN60516) are fitted between wheel and outside of the glass, fix using the screw and screw cap (bottom 'plunger wheels' are shown as an example).

10 a**b**

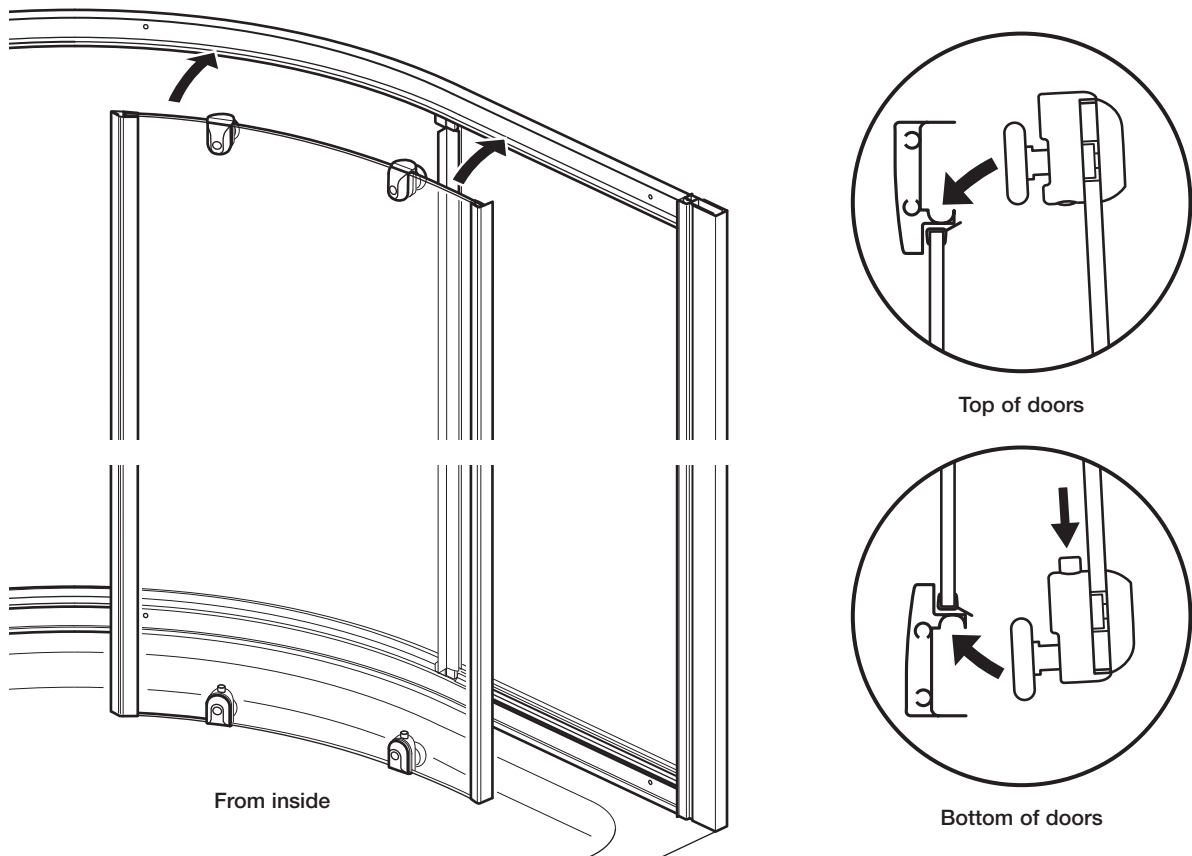
a: Select the vertical seals with the 9mm flipper (PN40260) and trim to 1785mm.

Push fit trimmed 'flipper seals' onto the back edge of the doors. **Ensure the flipper seal 'flaps' are on the outside of the doors.**

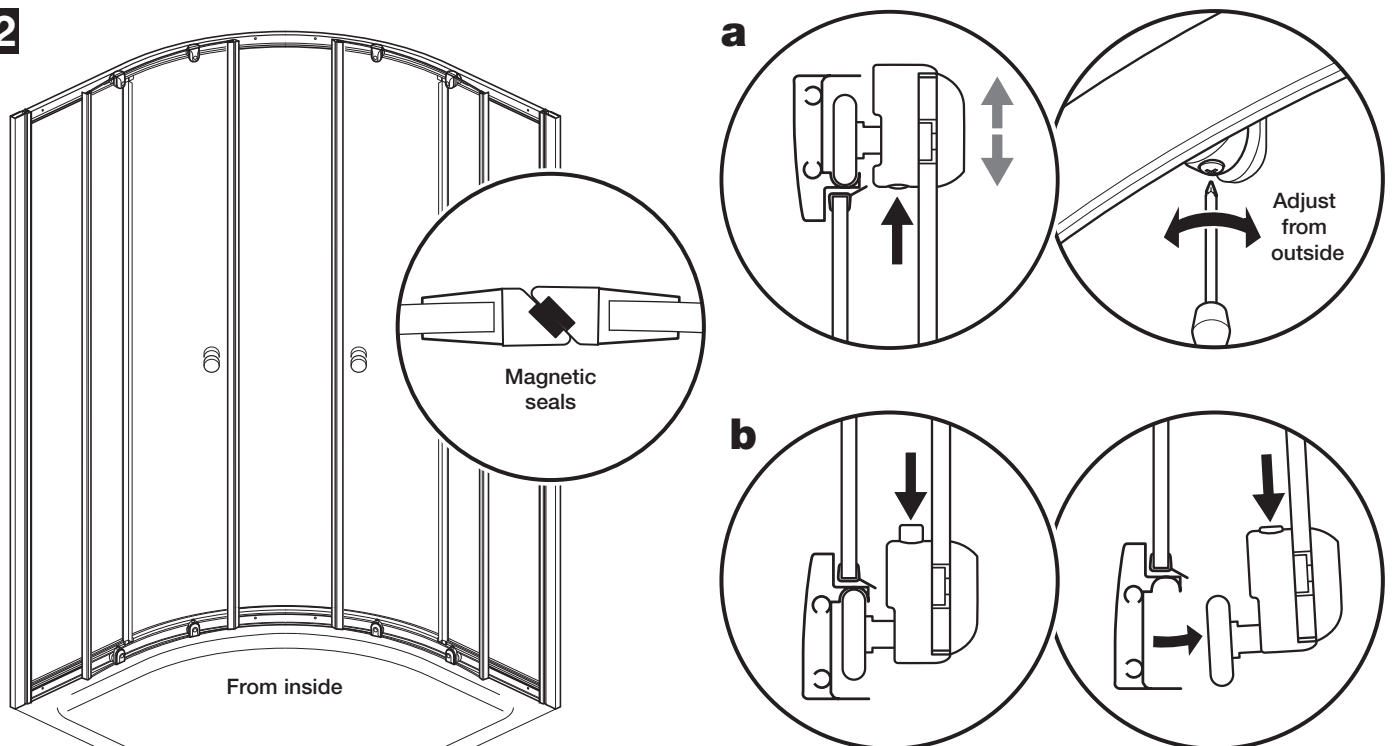
b: Push fit 'magnetic seals' (PN80564) onto the closing edge of the doors (**the same side as door handle**).

Note: Ensure the magnetic seals are positioned as shown.

Note: Wetting the glass with water will help fit the seals.

11

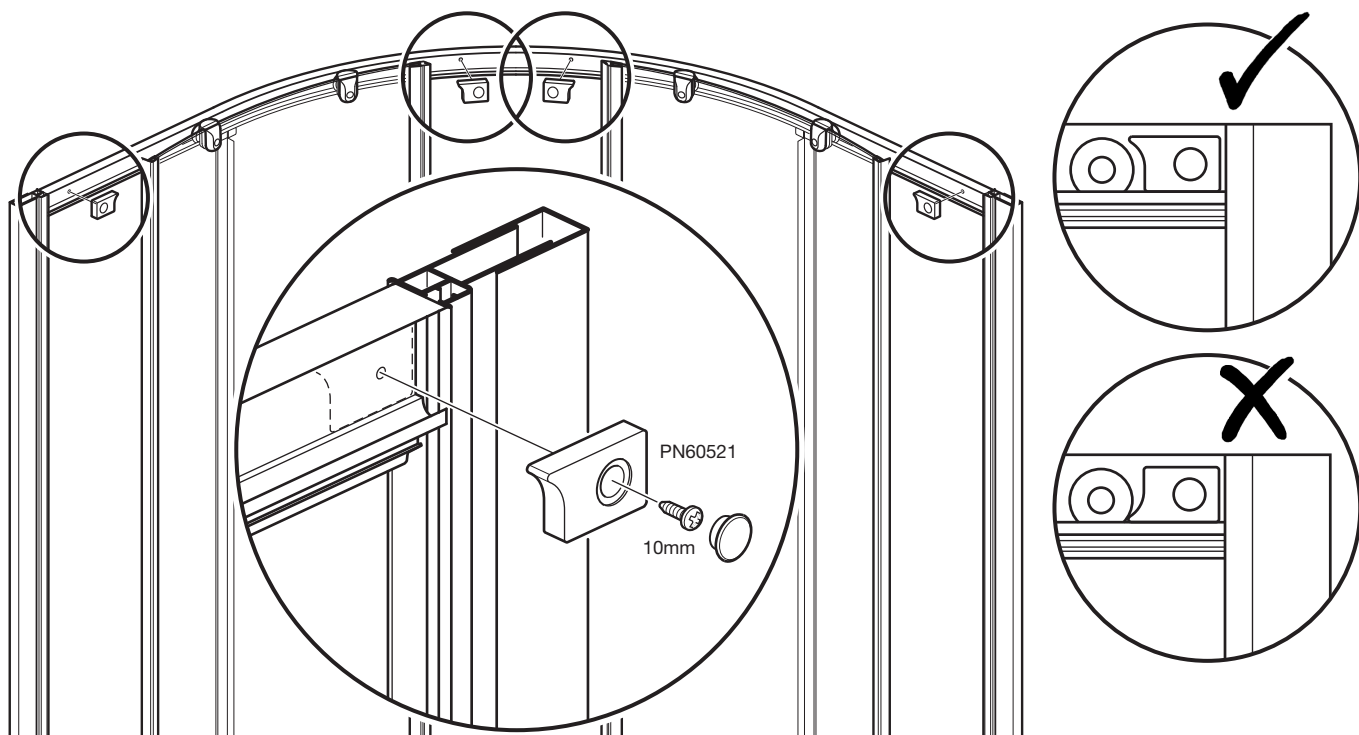
From inside the enclosure, position the top wheels into the top rail, push down the 'plungers' on both bottom wheels and position into the bottom rails.

12

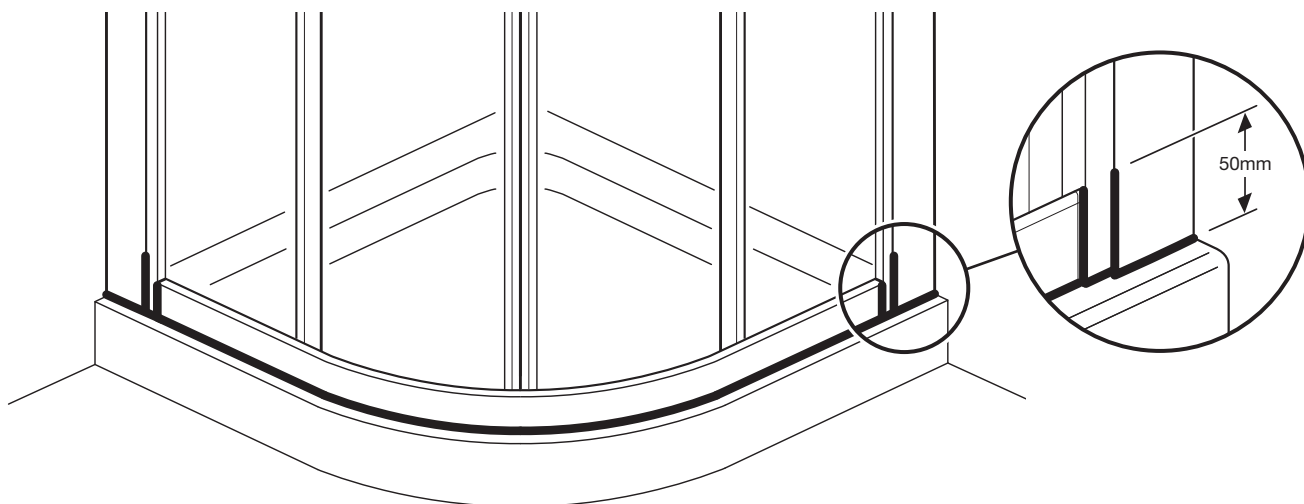
Door adjustment: The wheels at the top of the doors may need adjusting so that the doors slide freely and the magnetic seals meet evenly when the doors are closed.

a: From outside the enclosure and with the doors closed, adjust the screws on the top wheels. The bottom wheels should be securely located in the bottom rail but the door must not be raised so high that the 'plungers' on the bottom wheels do not operate.

b: The 'plungers' on the bottom wheels can be pushed down to unclip the doors which will allow access to clean the doors and fixed panels.

13

Attach 4 x bumpstops (PN60521) to the holes in the top and bottom rails (where shown) using 10mm screws and screw covers. Ensure they are fitted the correct way up as shown. **Note:** If fitted incorrectly, they could cause the doors to jump out of the rail.

14

From the outside only, apply sealant to the bottom of the enclosure and 50mm up the wall channels and vertical joints as shown.

Recycling

Packaging:- The cardboard and polythene parts of this packaging can be recycled.

End of life:- This product contains materials such as aluminium and glass which can be recycled.

Please contact your local authority to find your nearest recycling centre.

IMPORTANT: You must not use the shower for 24 hours after installation of the enclosure.

DO NOT use bleach, scouring powders, solvents or other aggressive cleaning agents. To clean, use warm soapy water and a clean cloth and rinse off.

Please note: There has been a glass coating applied to this product, use a squeegee to remove water and debris.

Periodically check all fixings and tighten if necessary.

CORAM SHOWERS LTD

Stanmore Industrial Estate, Bridgnorth, Shropshire WV15 5HP, UK • Tel: 01746 766466 • Fax: 01746 764140 • www.coram.co.uk