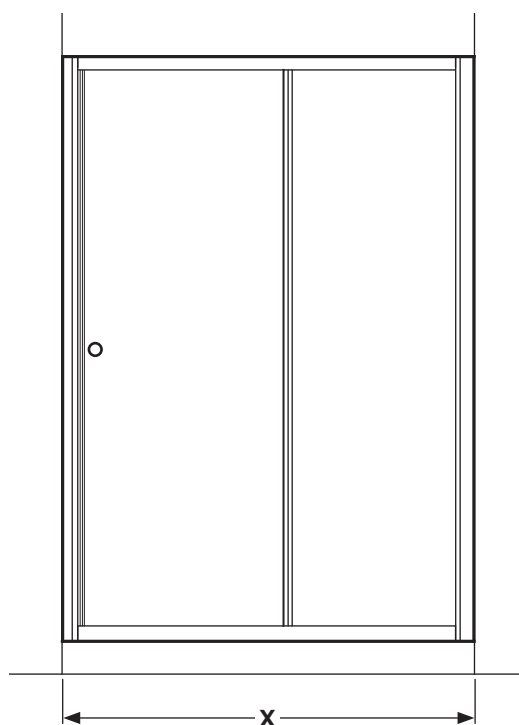


SLIDING DOOR



DIMENSIONS

Check the enclosure size in the table below matches the showertray installation.

1000 Door X = 965 - 1005mm

1200 Door X = 1165 - 1205mm

***Please read these instructions carefully and keep for future reference.
Incorrect fitting will invalidate the guarantee.***

SAFETY

- Handle glass with great care. Although the glass is very tough, sharp impacts can damage both the glass and metal frame.
- Make sure there are no hidden pipes or cables hidden in the wall where you intend to drill.
- Wear safety goggles, shoes and appropriate clothing.

BEFORE INSTALLATION

- Two people are needed to carry out parts of the procedure, lift with care.
- Check that the shower tray is level in all directions. The enclosure will not sit correctly on an uneven surface. If uneven, the wall channels may not fit and the doors may not shut correctly.
- The shower tray and the enclosure must match in size. Attempting to fit the incorrect size of enclosure to the shower tray will result in water leaks.
- The enclosure should be fitted on tiled walls which are sealed with waterproof grout. There must be a good silicone seal between the rim of the shower tray and the wall.
- Always check very carefully that components are vertical.

Equipment needed:

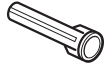

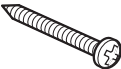





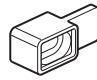






Drill, 6.5mm Masonry Bit, 4.5mm & 3mm Metal Bits (general), Crosshead Screwdriver, Right Angle, Fine Tooth Saw, Spirit Level, Pencil, Scissors, Silicone Sealant, Tape Measure, Masking Tape.

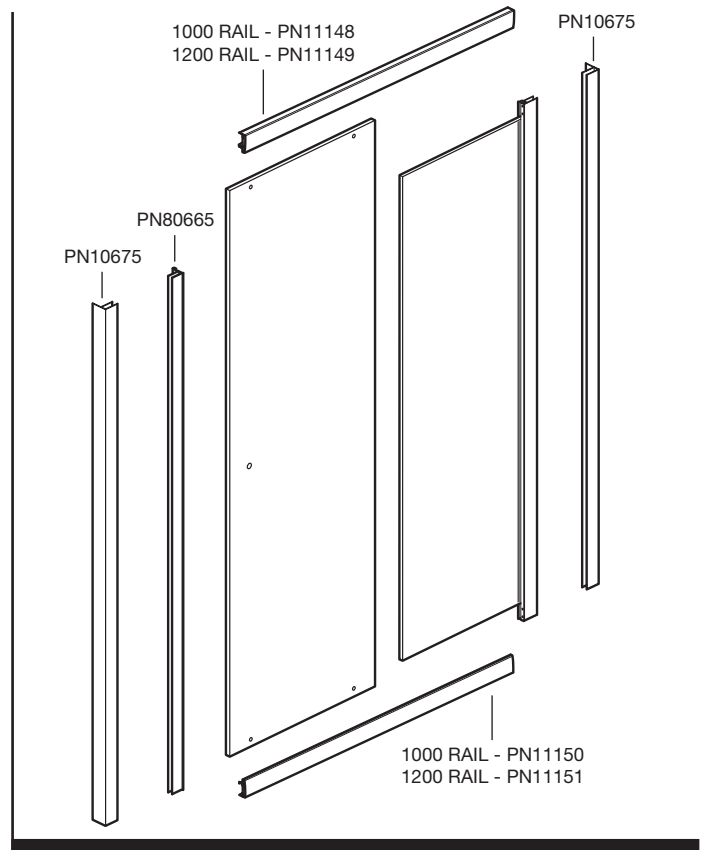
Note: The screws and wall plugs supplied are for masonry walls. For lightweight walls i.e. stud partition, plasterboard etc, use the correct type of fixings.

CUSTOMER CARELINE 01746 713410

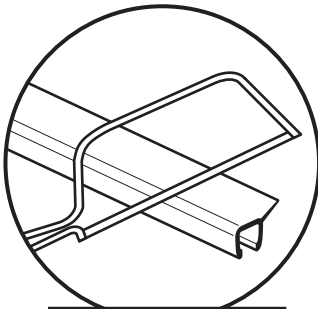
Check contents of pack before installation. If anything is missing, contact our Customer Careline for assistance.

CUSTOMER CARELINE: 01746 713410

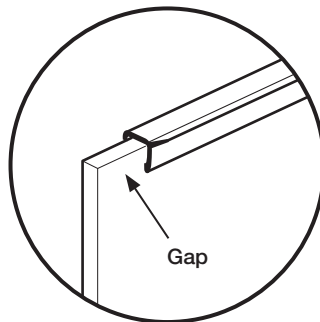
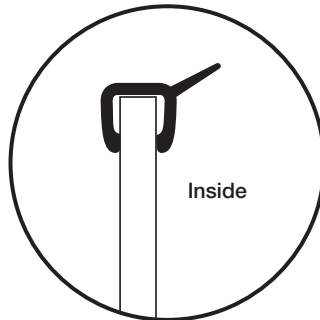
	PN3230	8		PN60518	2
	PN3225	16		PN60511	1
	PN60524	10		PN60521	1
	PN4748	14		PN40260	1
	PN50489	2		PN40095	1
	PN50488	2		PN40333	1
	PN60517	2		PN40332	1
	Top wheels				



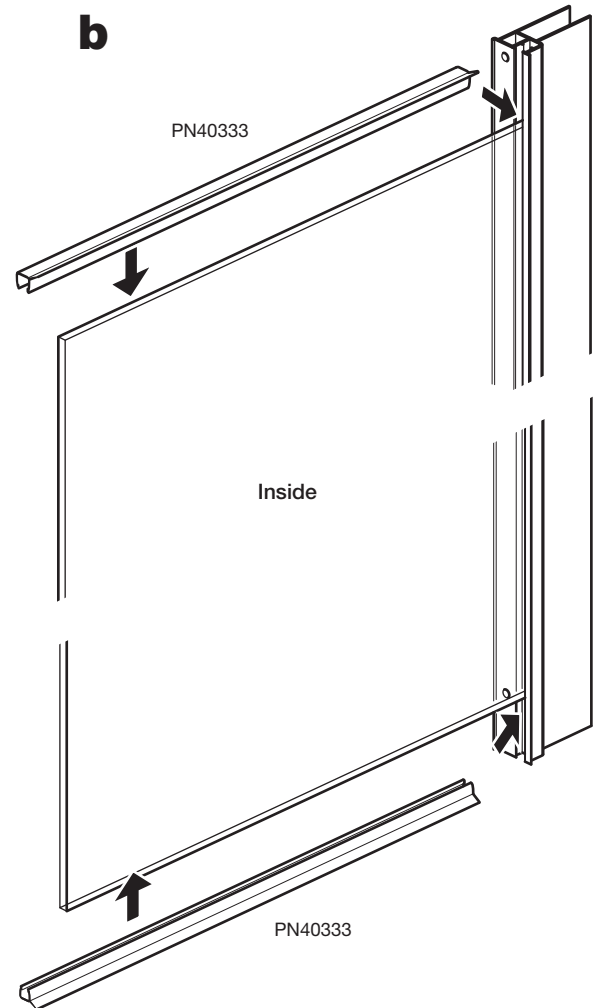
1 a



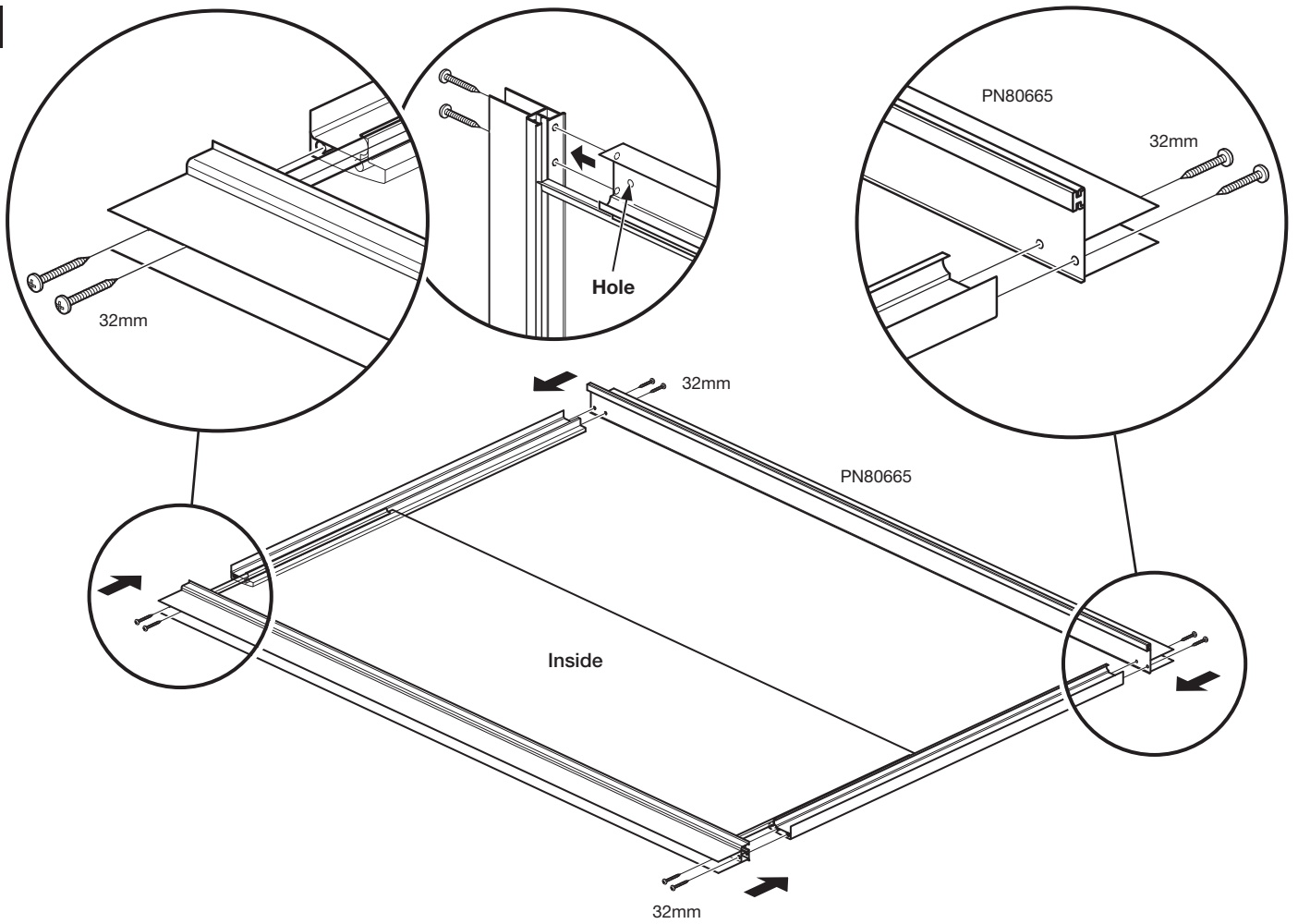
Trim 4x PN40333
1000 Model = 383mm
1200 Model = 483mm



b

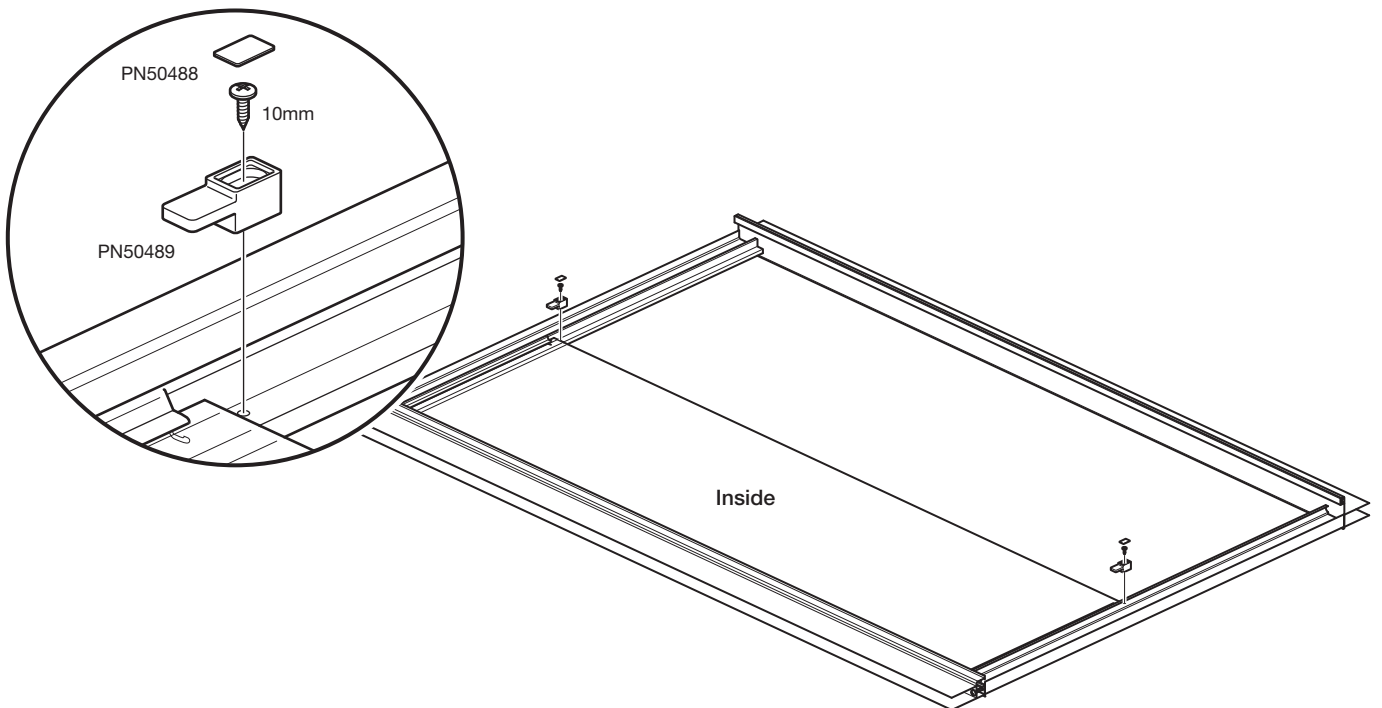


a: Trim two horizontal fixed panel seals (PN40333) to length: 1000 Model = 383mm - 1200 Model = 483mm.
b: Fit trimmed seals to top and bottom of the fixed panel. **Important:** Seal 'flipper' must be on inside of panel. The seals must be tight up against the metal. **Note:** Wetting the glass with water will help fit the seals.

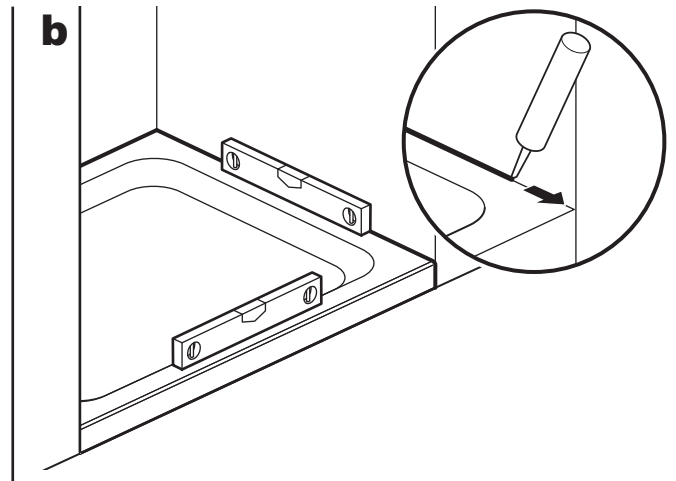
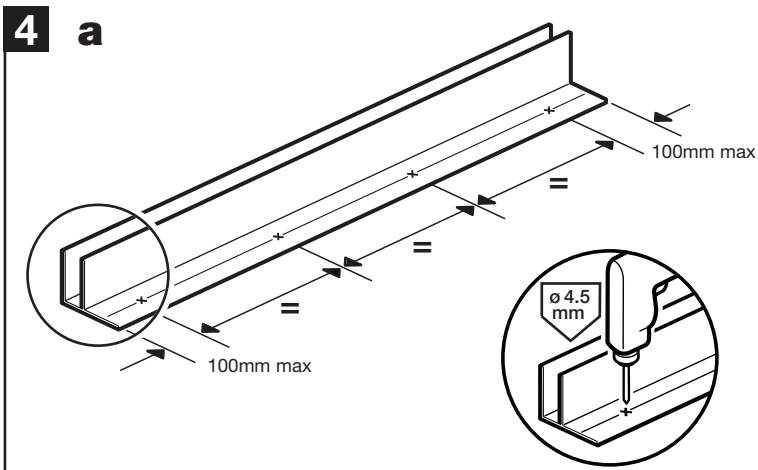
2

Attach horizontal rails to top and bottom of the fixed panel using 4 x 32mm screws.

Important: The rails are 'handed' in pairs, the hole in the rails must be on the inside next to the 'fixed' vertical channel.
Attach magnetic profile (PN80665) to horizontal rails using 4 x 32mm screws.

3

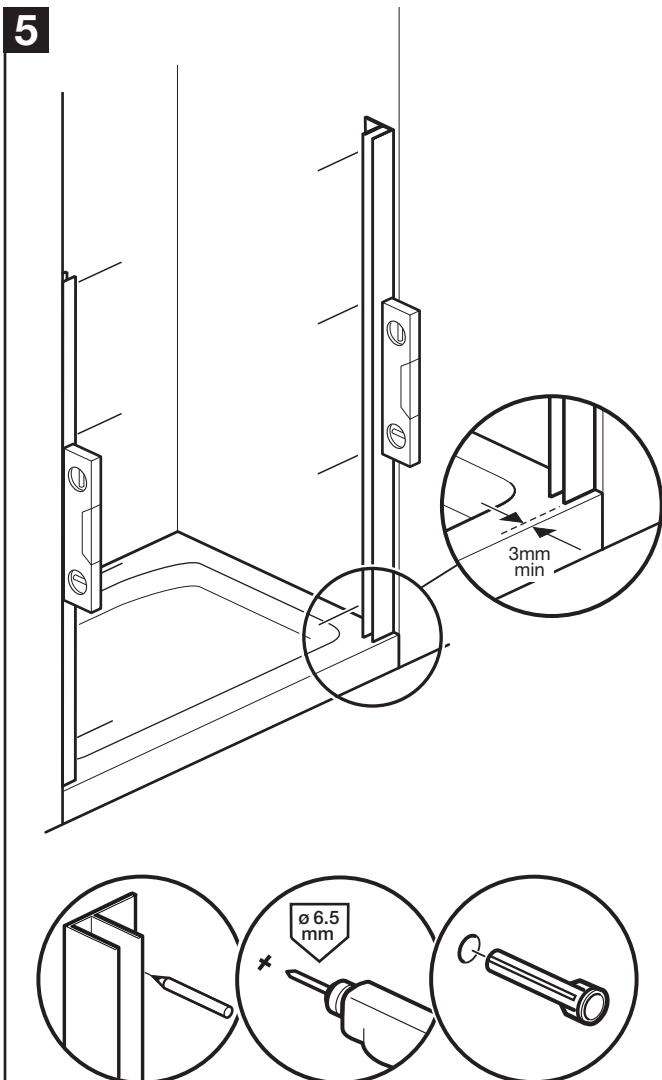
Attach glass clamps to each horizontal rail (at edge of glass) using 10mm screws, **tighten by hand only - do not overtighten.**
Push fit glass clamp covers.



a: Drill holes in both wall channels (PN10675) at points shown using a 4.5mm drill bit, through the middle and in the groove.

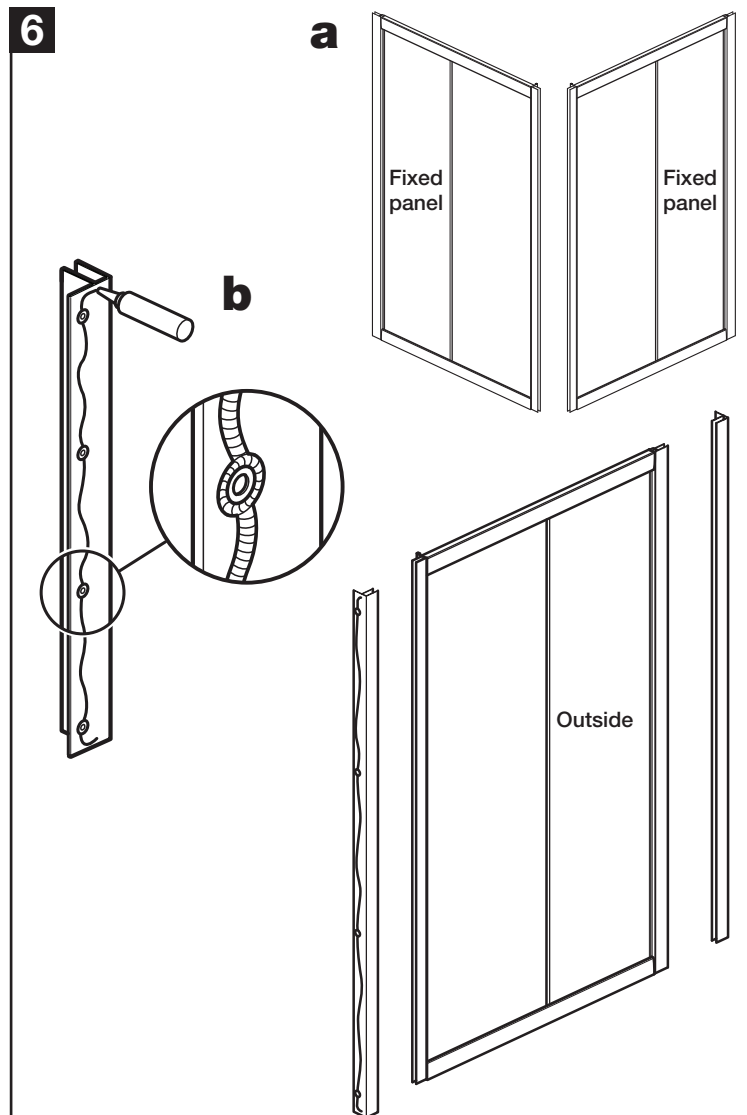
b: Ensure the shower tray is level in all directions.

IMPORTANT: Clean the tray and seal the gap between the tray surface and tiles. It is important that the tray is sealed right up to the tray edge so that the bottom of the wall channel is sealed. Failure to do this will cause water to leak under the wall channel and between the tray and tiles, resulting in damp patches on the wall and under the tray.



Place wall channels on tray ensuring they are vertical and a minimum of 3mm back from the front of the tray.

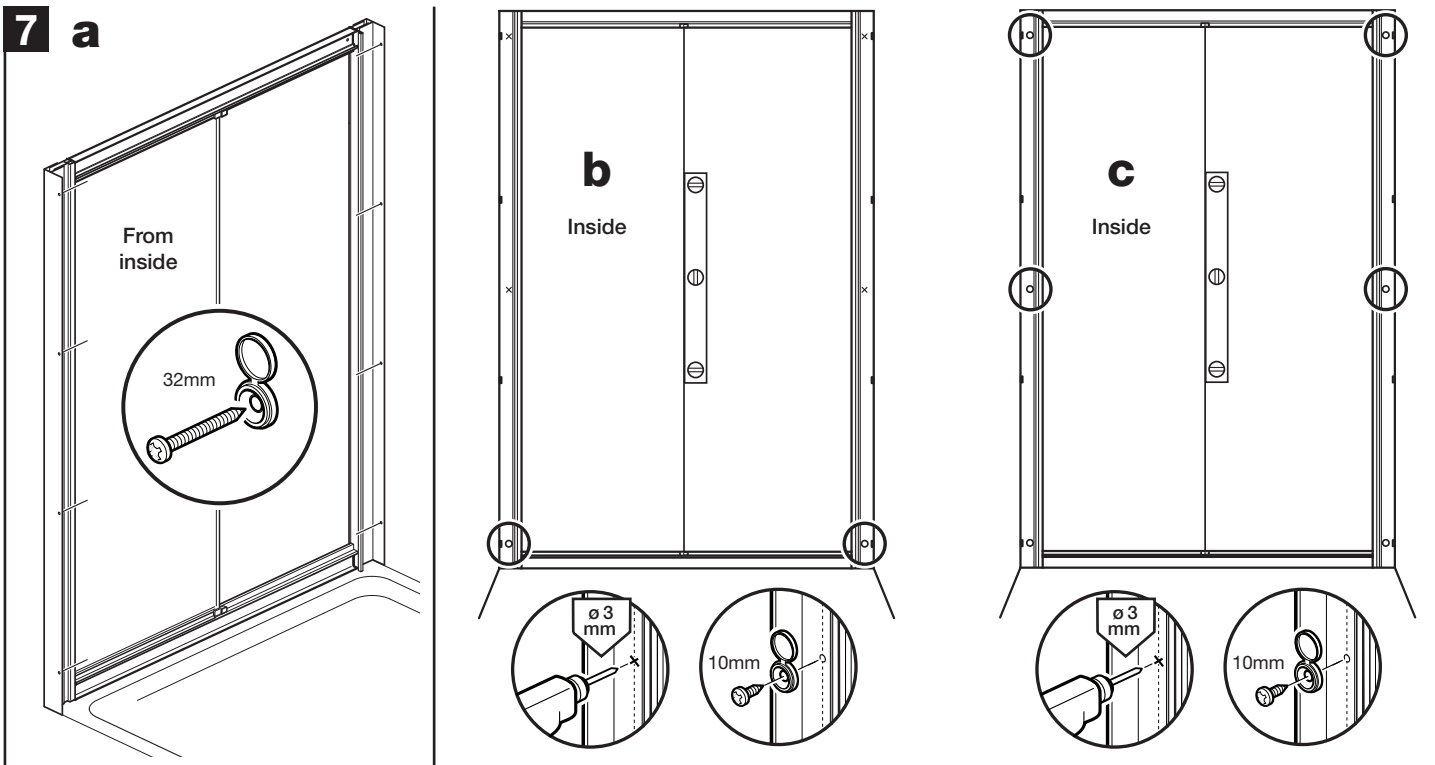
Place masking tape against the wall before marking the drill hole positions. This will prevent the drill bit slipping. Drill 6.5mm holes, 30mm deep and insert wall plugs.



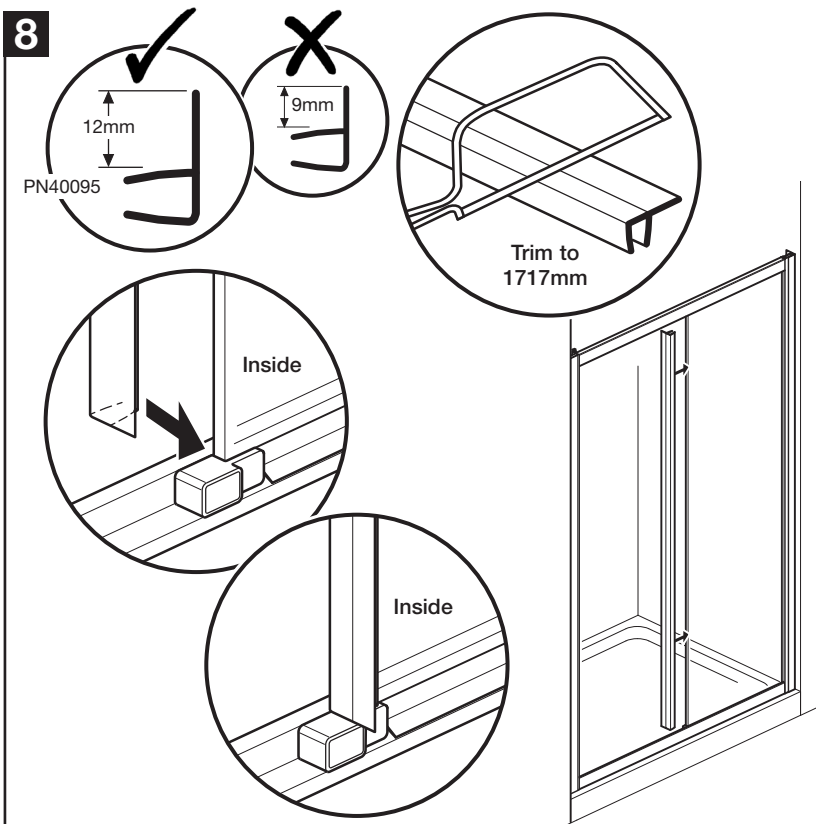
a: Choose the opening side for the door (turn over if necessary).

b: Apply sealant to back of wall channels.

Place wall channels onto door.



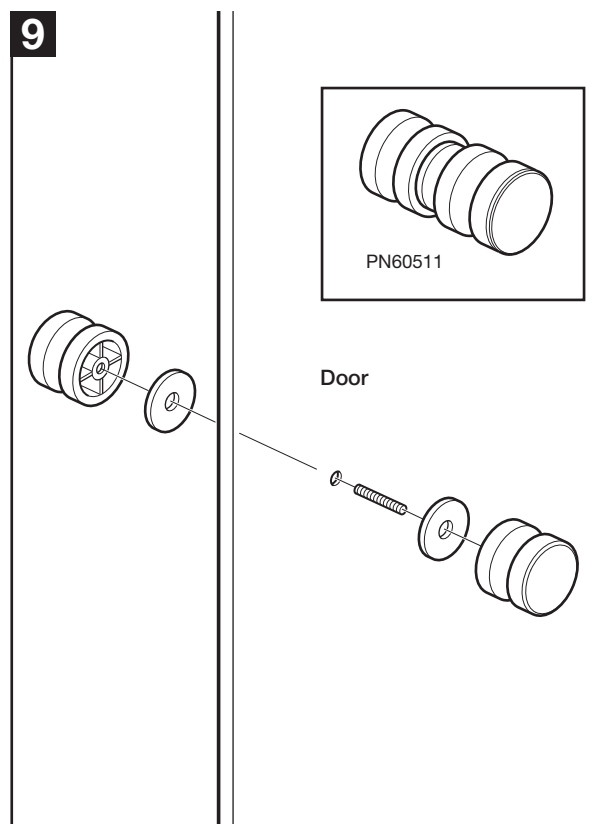
- a:** Place door in position on the tray, fix wall channels to walls using 32mm screws and screw caps.
- b:** Check door is centrally positioned, perfectly vertical and square in the frame. Drill inside of wall channels using 3mm drill bit in the two lower positions shown. Fix using 10mm screws and screw caps.
- c:** Check door is centrally positioned, perfectly vertical and square in the frame. Drill the next four holes in the positions shown inside of the wall channels using 3mm drill bit. Fix using 10mm screws and screw caps.



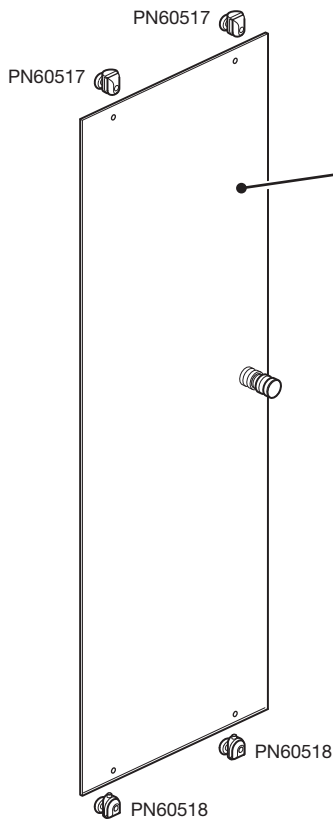
Select the vertical seal with the 12mm flipper (PN40095) and trim to 1717mm. Fit trimmed seal to the fixed panel, the **seal must sit tight against glass clamps (top and bottom).**

Important: Seal 'flipper' must be on inside of the enclosure.

Note: Wetting the glass with water will help fit the seal.



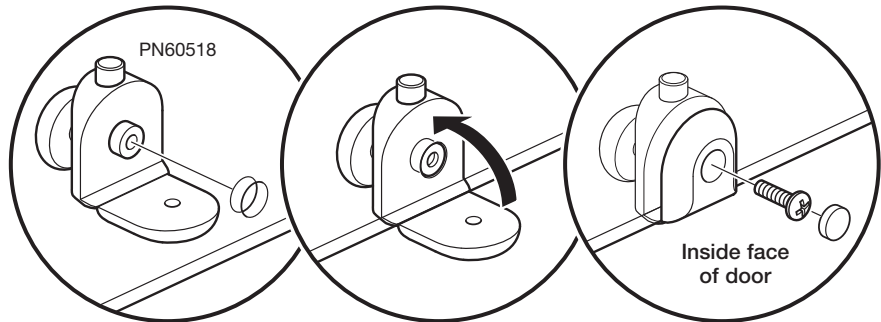
Fit the door handles to the door ensuring the plastic washers are fitted each side of the glass.

10**IMPORTANT**

Ensure that the coated side of the glass is on the inside of the door.

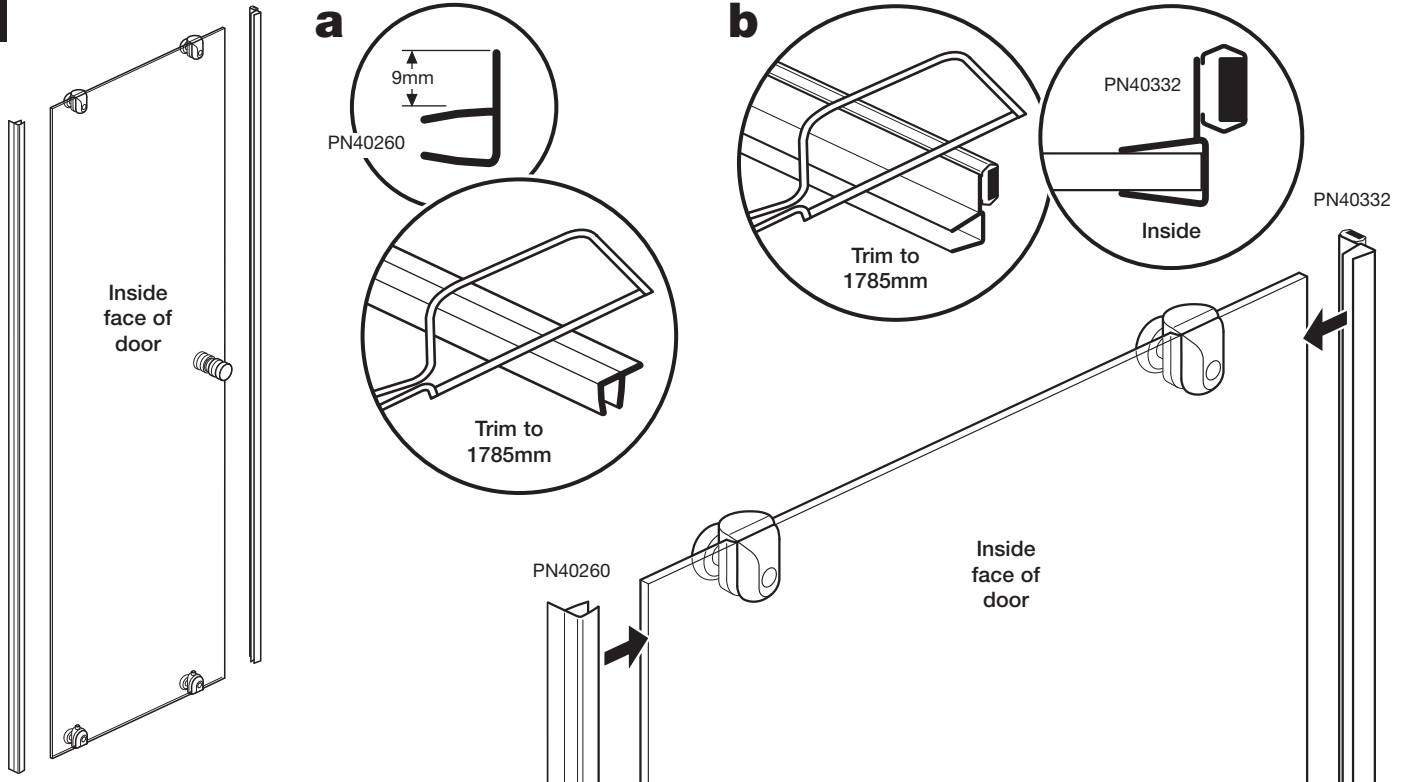
Satin glass patterns **MUST** be installed to the outside of the enclosure.

Bottom 'plunger wheels' are shown as an example.



Important: Ensure that the coated side of the glass is on the inside of the door.

Attach the wheels to the door: Adjuster wheels (PN60517) at the top and plunger wheels (PN60518) at the bottom. Attach as shown and fix using the screw and screw cap (bottom 'plunger wheels' are shown as an example).

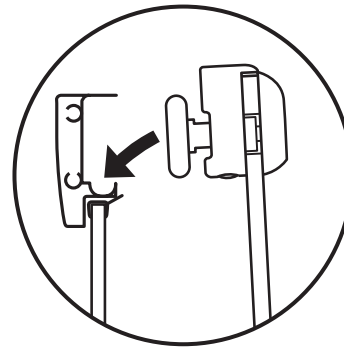
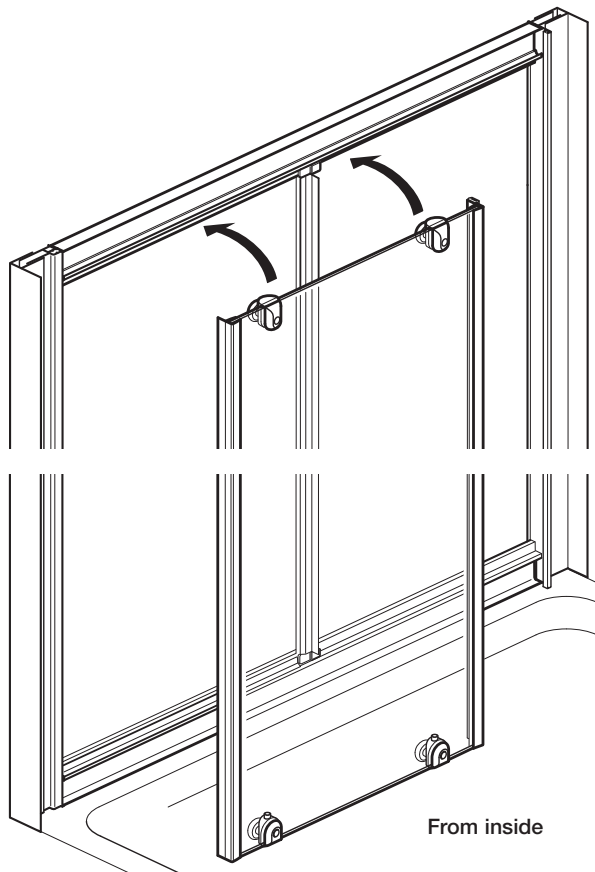
11

a: Select the vertical seal with the 9mm flipper (PN40260) and trim to 1785mm.

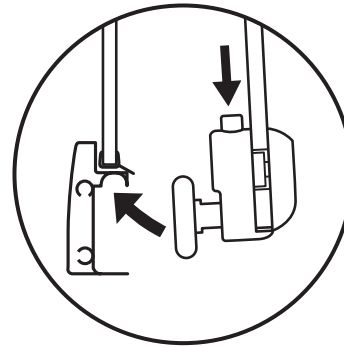
Push fit trimmed 'flipper seal' onto the back edge of the door. **Ensure the flipper seal 'flap' is on the outside of the door.**

b: Select the magnetic seal (PN40332) and trim to 1785mm. Push fit 'magnetic seal' onto the closing edge of the doors (the same side as door handle).

Note: Ensure the magnetic seal is positioned as shown. **Note:** Wetting the glass with water will help fit the seals.

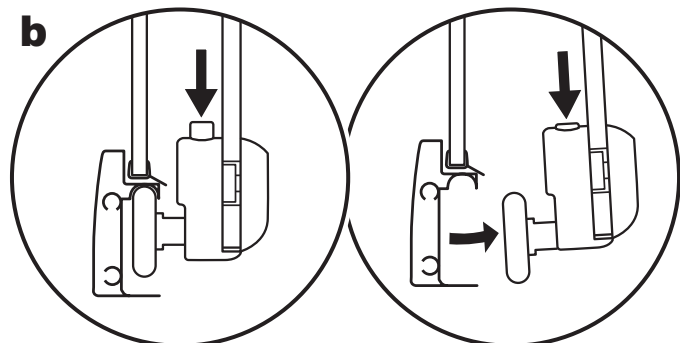
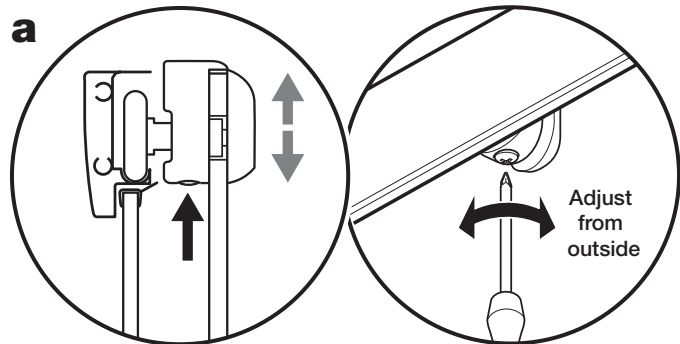
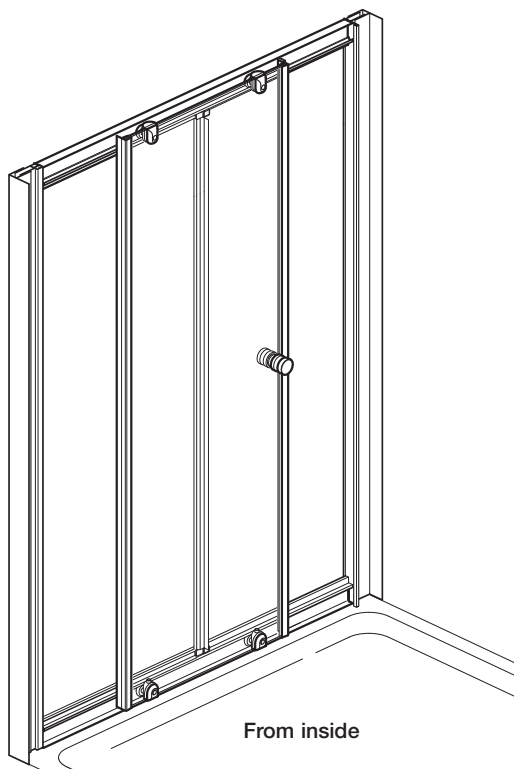
12

Top of door



Bottom of door

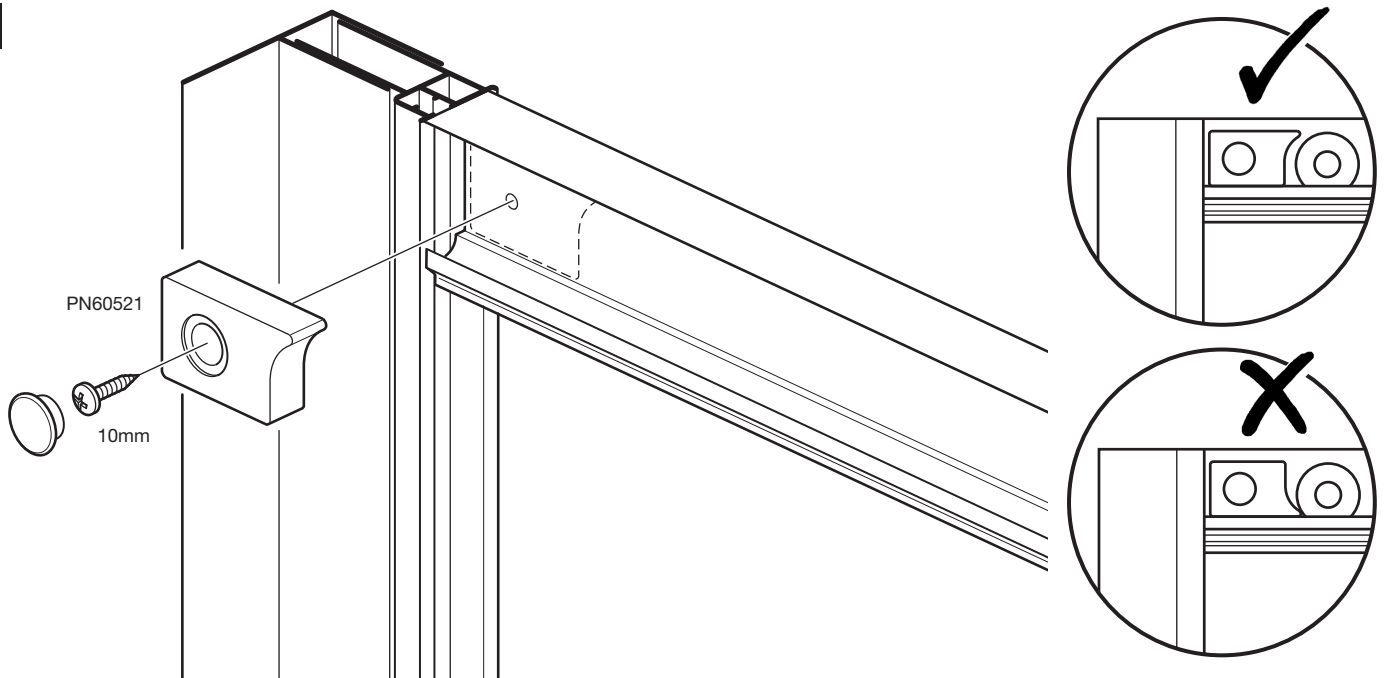
From inside the enclosure, position the top wheels into the top rail, push down the 'plungers' on both bottom wheels and position into the bottom rail.

13

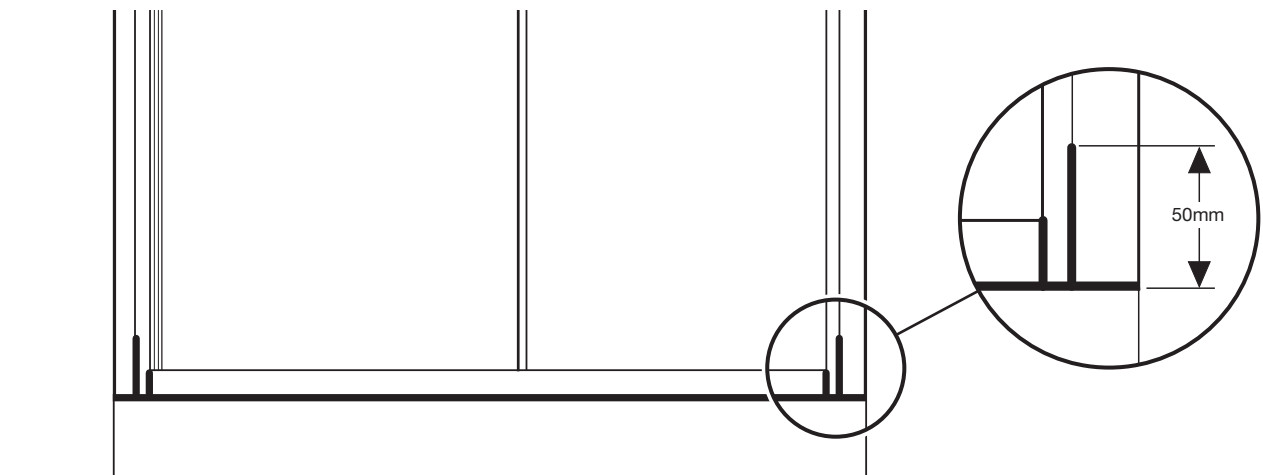
Door adjustment: The wheels at the top of the door may need adjusting so that the door slides freely and the magnetic door seal meets evenly with magnetic frame profile when the door is closed.

a: From outside the enclosure and with the door closed, adjust the screws on the top wheels. The bottom wheels should be securely located in the bottom rail but the door must not be raised so high that the 'plungers' on the bottom wheels do not operate.

b: The 'plungers' on the bottom wheels can be pushed down to unclip the door which will allow access to clean the door and fixed panel.

14

Attach 2 x bumpstops (PN60521) to the holes at the end of the top and bottom rails using 10mm screws and screw covers. Ensure they are fitted the correct way up as shown. **Note:** If fitted incorrectly, they could cause the door to jump out of the rail.

15

From the outside only, apply sealant to the bottom of the enclosure and 50mm up the wall channels and vertical joints as shown.

Recycling

Packaging:- The cardboard and polythene parts of this packaging can be recycled.

End of life:- This product contains materials such as aluminium and glass which can be recycled.

Please contact your local authority to find your nearest recycling centre.

IMPORTANT: You must not use the shower for 24 hours after installation of the enclosure.

DO NOT use bleach, scouring powders, solvents or other aggressive cleaning agents. To clean, use warm soapy water and a clean cloth and rinse off.

Please note: There has been a glass coating applied to this product, use a squeegee to remove water and debris.

Periodically check all fixings and tighten if necessary.

CORAM SHOWERS LTD

Stanmore Industrial Estate, Bridgnorth, Shropshire WV15 5HP, UK • Tel: 01746 766466 • Fax: 01746 764140 • www.coram.co.uk