

Battery Powered Wall / Ceiling Light - From Byretech - White

Part numbers.

- BBL003 - White Light

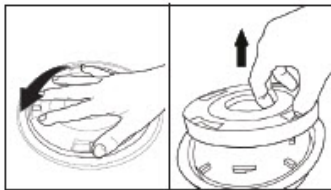
Tools required to complete the installation.

- Phillips Screwdriver
- Power Drill / Battery operated drill
- Suitable drill bit



Installation instructions

NOTE: Light sensor only allows light to activate in darkness. We recommend you test in a dark room or closet.



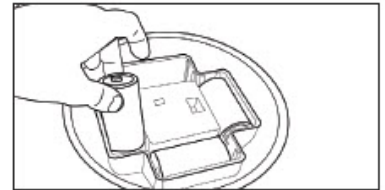
1. To remove the back plate off the light, press hand against the plate and twist counter clockwise. Once loose, lift the plate off the light.



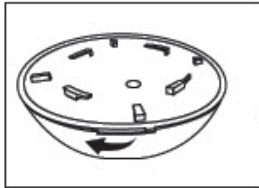
2. Use a screwdriver to remove the screw attaching the back plate. Twist the screw counter clockwise to loosen.



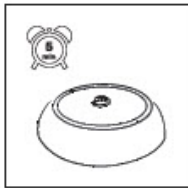
3. Use one hand to stabilize the light and use the other to twist the battery plate off the light. Hook a finger onto one of the tabs on the plate and twist counter clockwise until loose. Then lift the plate off the light.



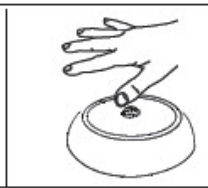
4. Insert brand new batteries into the battery compartment. Make sure the flat ends are against the springs.



5. To replace back plate, line up the tab with the alignment notch. Once in place, hook one finger onto one of the tabs and twist clockwise until tight. Make sure the tab is at the end of the alignment notch to ensure the weatherproof seal is engaged. Then replace the screw to hold plate into place.



8. Before mounting your light, test the motion sensor in a dark closet or bathroom. Close the light in the dark room and leave for up to 5 minutes. When you re-enter the room, the light should activate with motion.



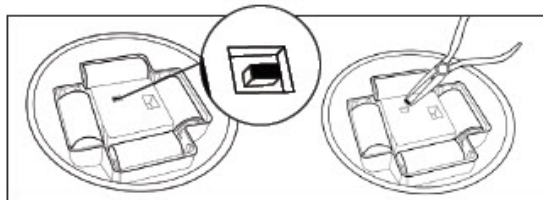
9. Determine mounting location for the light. Line up the mounting plate with ceiling and mark the pilot holes with a pencil. Screw anchors into the pilot holes and line up the plate so the flat side is touching the ceiling. Then drive the screws into the ceiling.



10. Line up the light with the mounting plate and twist the light clockwise until it locks into place.

Light sensor removal instructions

These instructions are for customers who find there is ambient light in the desired location that prevents their light from activating. Once the sensor is removed, your light will activate, regardless of surrounding lights. Battery life will decrease once the sensor is removed, because light will activate more often.



Locate the black rectangular piece in the light. Remove the black rectangular piece with needle nose pliers by lifting up. Once the piece is removed, the light sensor will not work until piece is replaced. **Tape the piece to the back of the light to ensure you don't lose it for future use.**

Hints and Tips to complete your installation.

- **If the light will not go off this means the batteries are low - Change the batteries.....**
- Don't mix old and new batteries and install them the correct way around
- When you replace the batteries the light may come on. This is quite normal. If this happens take the unit into a dark room and allow it a few minutes to settle / adjust itself.