

WATERGUARD CORATECH® SHOWERTRAY

1000 x 800, 1200 x 760 & 1200 x 800 SHOWERTRAY

Please read these instructions carefully and keep for future reference. Incorrect fitting will invalidate the guarantee.

SAFETY



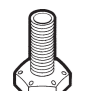


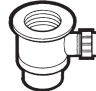
- Make sure there are no hidden pipes or cables in the floor or walls where you intend to drill.
- Wear safety goggles, shoes and appropriate clothing.

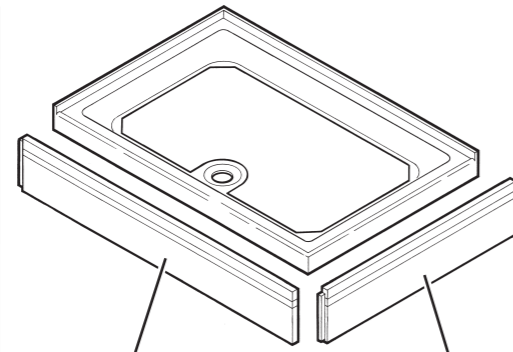
EQUIPMENT NEEDED

Crosshead Screwdriver, Spirit Level, Pencil, Fine Tooth Saw, Ruler, Masking Tape, Silicone Sealant, Methylated Spirit.

Check contents of pack before installation.

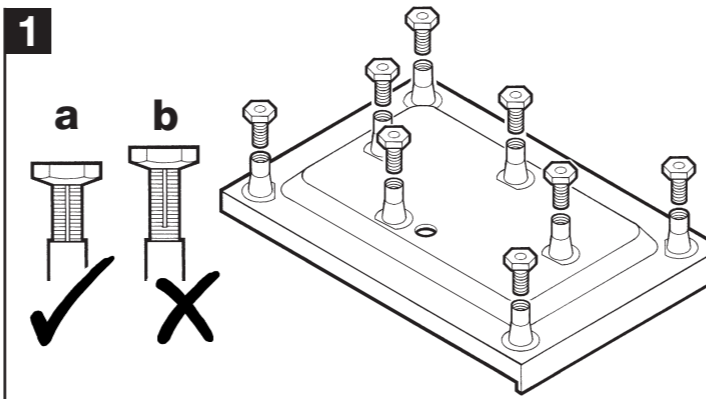
If there is anything missing, contact our Customer Careline for assistance: +44 (0) 1746 713410

	PN60138	8
	PN60139	6
	PN50193	8
	PN50196	4 2 Upstands
		2 3 Upstands
	PN60171	1



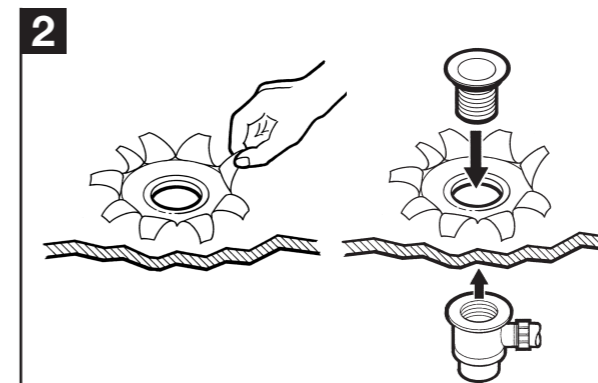
1000 x 800
2 Upstands (Left hand) PN30016
2 Upstands (Right hand) PN30017
3 Upstands PN30016
1200 x 760 & 1200 x 800
All options PN30009

1000 x 800
PN30007
1200 x 760
PN30005
1200 x 800
PN30007

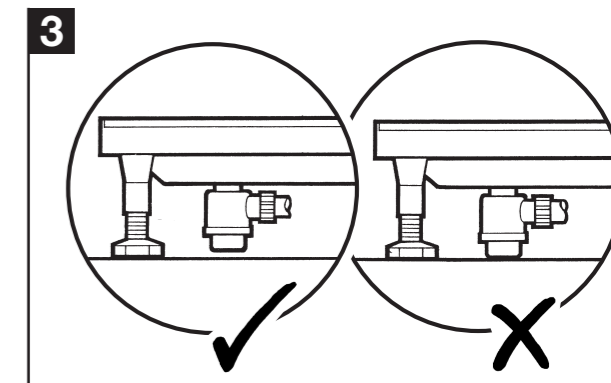


Fit ALL legs, including the centre legs.

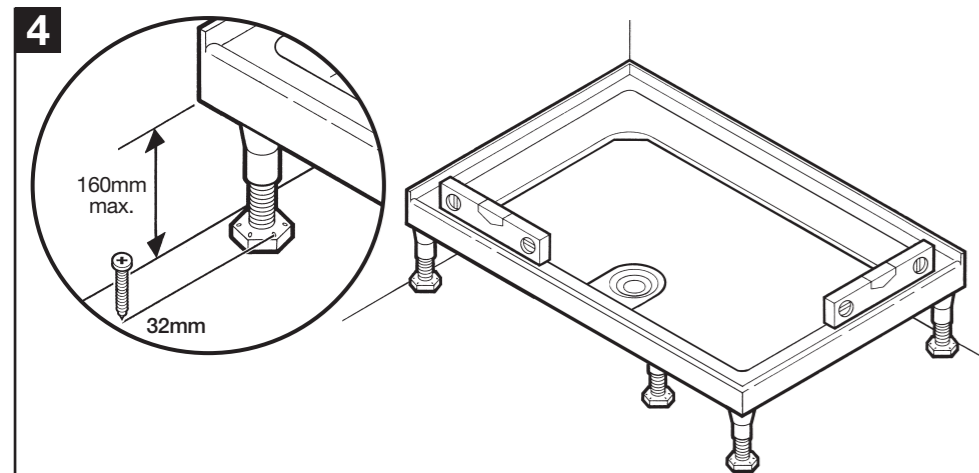
Note: The legs must be screwed in far enough that the end of the groove on the leg is **NOT** visible (a).



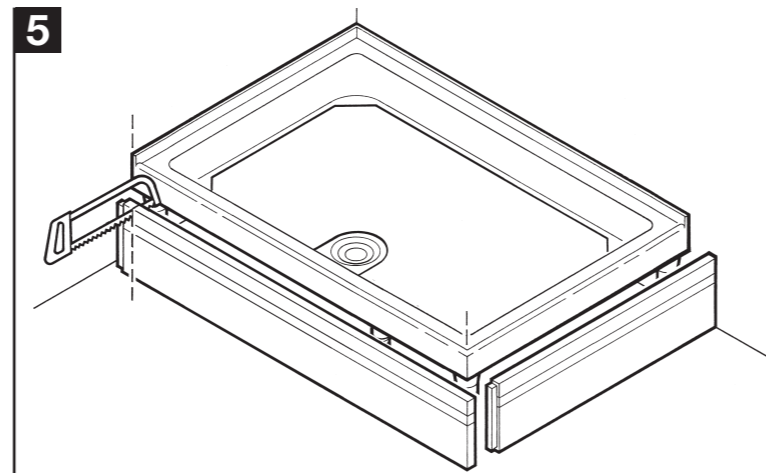
Peel back protective film from waste hole inside the tray and fit waste outlet. **Putty, mastics or acrylic sealant will damage the surface of the tray. Only use silicone sealant.**



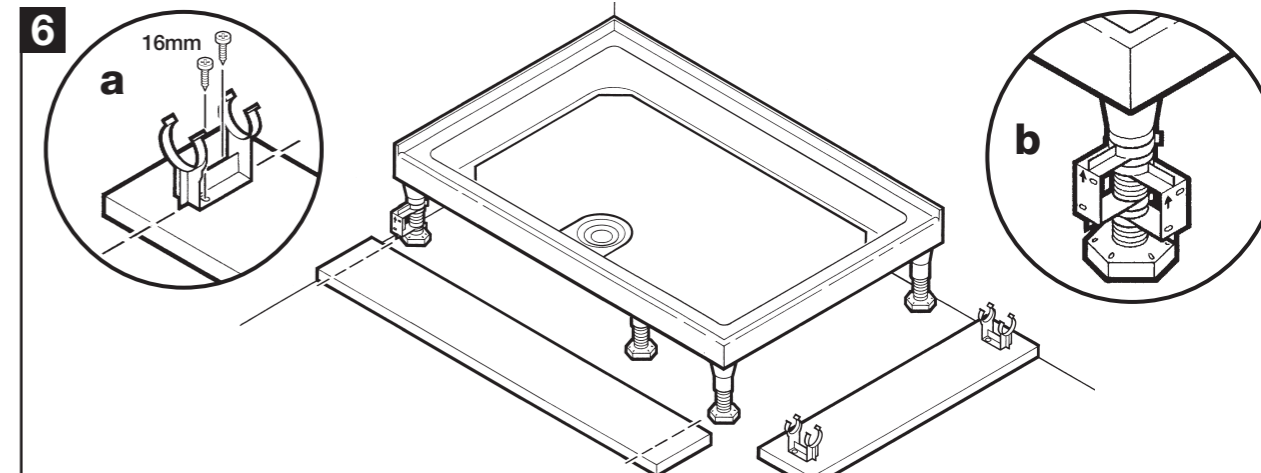
Place the tray in position and fit waste pipe. **Make sure pipe work is clear of floor, and the base of the tray.**



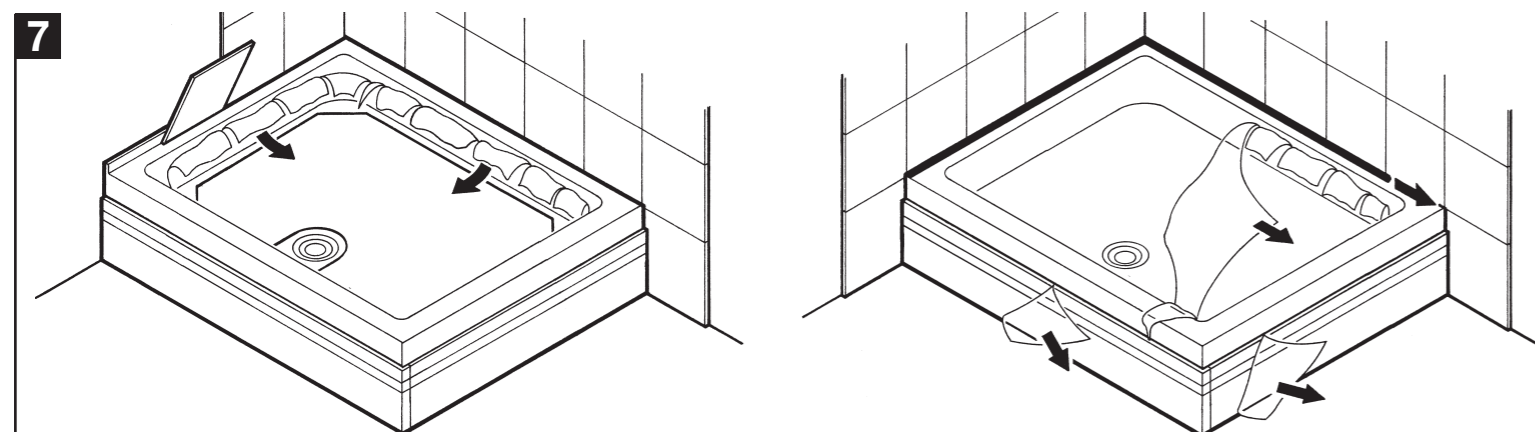
Adjust legs where necessary. Check tray is level in all directions (there is a built in fall on the tray for water drainage). **Centre legs MUST make contact with the floor.** Fix legs to the floor using 32mm screws, where accessible.



If necessary, carefully cut the outside edges of panel/s to fit.



Align panel/s up with tray, fit brackets and mark centre line of brackets onto back of panel/s. Ensure the direction arrow on panel clips point up and fix to the panel/s using 16mm screws (a). **Corner leg:** Panel clips must be fitted to panel/s so they are staggered and do not clash with each other when fitted to legs (b). Push fit panel/s into place.



Peel back protective film from back edges of tray. **Tile over upstands. Seal wall edges of tray with silicone sealant.** When the final installation of the enclosure is complete, remove the cardboard tray protector and the remaining protective film.

BEFORE INSTALLATION

The space under this showertray must be ventilated. Sufficient ventilation will be available when using the detachable panel provided. If the panel is not fitted and the tray is surrounded on all sides by tiles or masonry, then a 25mm diameter hole should be drilled through a wall or floorboards to ventilate the underside of the showertray.

- Once fitted the showertray must be tiled in place.
- **Putty, mastics or acrylic sealant will damage the surface of the showertray. Only use silicone sealant.**
- Areas requiring silicone sealant should be cleaned with methylated spirit first.
- Leave the cardboard tray protector in place in the tray until installation is complete.

IMPORTANT

You must not use or work on the showertray for 24 hours after installation.

DO NOT use bleach, scouring powders, solvents or other aggressive cleaning agents. To clean, use warm soapy water and a clean cloth and rinse off.

NOTE: The tray should be inspected six months after installation, check for any floor movement. If necessary adjust all the legs to ensure they are resting on the floor.

CUSTOMER CARELINE +44 (0) 1746 713410

A PRODUCT OF THE CORAM GROUP OF COMPANIES

Coram Showers Ltd. Stanmore Industrial Estate, Bridgnorth, Shropshire WV15 5HP, UK

Tel: +44 (0) 1746 766466 Fax: +44 (0) 1746 764140

www.coram.co.uk