

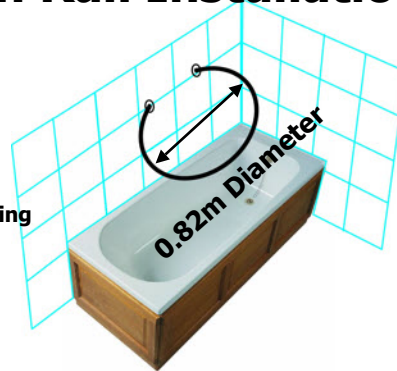
SHOWER RAIL

Available from
www.byretech.com

Mini O Shape Shower Bath Rail Installation.

Tools required to complete the installation.

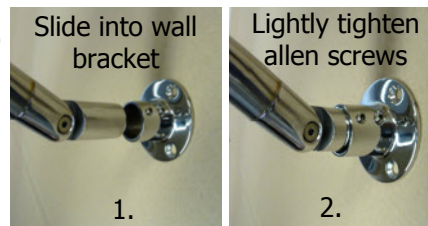
- Electric Drill with **8mm** masonry drill bit 
- Suitable Hex Screwdriver 
- Masking tape to ensure tiles are not damaged when drilling 
- Spirit level to get rail level 
- Tape measure 



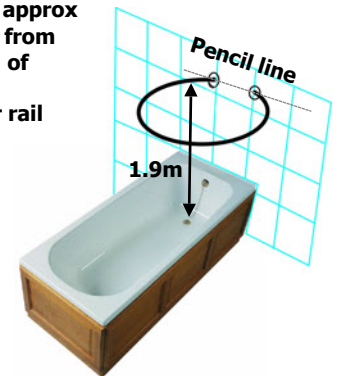
Installation instructions

Due to it's design, you will need to assemble the rail to get a perfect fit with your own bath. Please read the fitting instructions carefully.

- Unpack the rail and the wall brackets.
- Un screw the Allen Screws from the Wall Brackets taking care not to loose them. At this point make sure the swivel joints are just loosened off a little.
- Slide the swivel joints into the wall brackets as per picture (1.) gently tighten up one of the screws to hold the brackets in place - figure (2.)
- If you are using a 180 drop (length) shower curtain you will need to fit your new shower rail 190cm above the plug hole of your bath. This is so your curtain when fitted will sit just above the bottom of your bath.



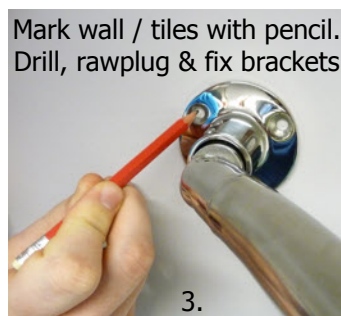
- 1.9m approx height from bottom of bath to shower rail



- Tape up area with masking tape
- Mark & drill holes using an 8mm masonry drill
- Add rawplugs & fix wall bracket to tiled wall

Note. The ideal curtain for this would be 220cm Wide x 180cm Drop (12 eyelets) available from Byretech. Part Number BSC51 (white)

- Make two small pencil marks on your tiles at 190cm above the plughole and offer up the rail to the wall / tiles where the rail will sit at 190cm above plughole.
- Fix masking tape to the area where you will fix both brackets and with a pencil, mark the holes as per Picture (3) so you know where to drill.
- Mark, drill and rawplug using an 8mm masonry drill.
- Secure the wall brackets to the wall with the screws provided. (At this point you may want to attach the curtain rings to the rail)
- Offer up the rail to the wall brackets, slide in and secure the rail with the 2 allen screws on each wall bracket. Take care not to over tighten the screws.
- Tighten up the swivel joint screw and your installation is complete.



- Ensure rod is level and straight
- Mark new bracket and repeat above procedure then fix rail in place



Byretech Ltd
The Bathroom Water Damage Prevention specialists

Byretech Ltd
Unit 51 Padgets Lane, South Moons Moat,
Redditch, Worcestershire B98 0RD UK.
Phone: +44 (0) 1527 522 522 Fax: +44 (0) 1527 522 111
E-mail: info@byretech.com Web: www.byretech.com